

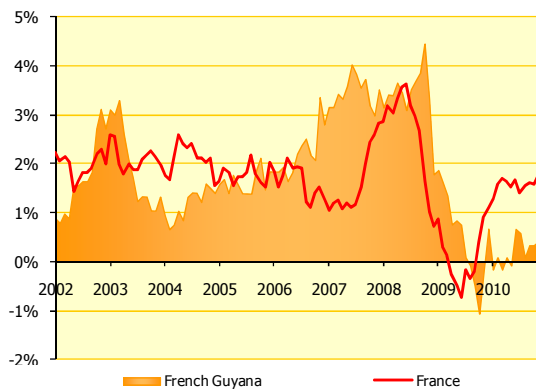


Economic scoreboard of French Guyana



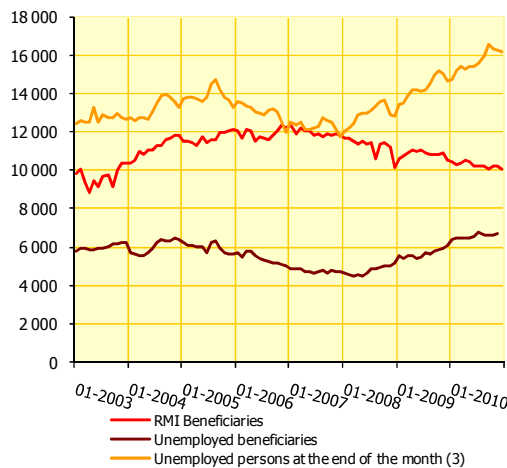
Updated : february 2011

Macro-economic indicators



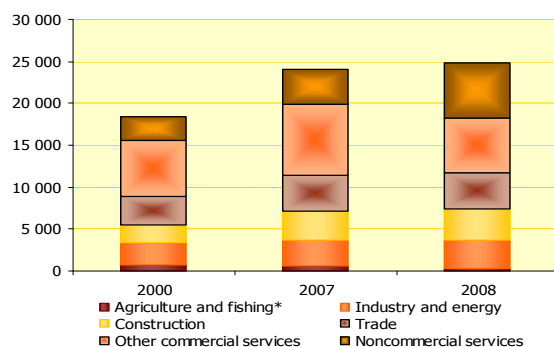
Price evolution over 12 months	2007	2008	2009	2010	Var. 10/09 in point(s)
French Guyana					
March	3,1%	3,4%	1,6%	0,1%	-1,5
June	3,6%	3,5%	0,8%	-0,1%	-0,9
September	3,5%	3,7%	-0,1%	0,1%	0,2
December	3,0%	3,3%	-0,2%	0,4%	0,6
France					
March	1,2%	3,2%	0,3%	1,6%	1,3
June	1,2%	3,6%	-0,5%	1,5%	2,0
September	1,5%	3,0%	-0,4%	1,6%	2,0
December	2,6%	1,0%	0,9%	1,8%	0,9

Source : INSEE



Job, unemployment	2007	2008	2009	2010* (déc.)	Var. 10/09 (dec. to dec.)
RMI (1) mean minimum benefit paid to those with no other source of income					
RMI Beneficiaries	12 178	11 343	11 415	10 079	-4,0%
Cumulated paid amounts (millions of €)	68,8	66,2	65,1	63,6	-0,7%
Average monthly allowance	434	440	446	na	na
Unemployment insurance (2)					
Unemployed beneficiaries	4 706	5 186	6 082	6 718**	12,9%**
Cumulated paid amounts (millions of €)	45,8	42,4	54,4	na	na
Unemployed persons at the end of the month (3)	11 697	12 834	14 624	16 185	10,7%
Unemployment rate (ILO) (4)	21,2%	21,8%	21,1%	21,0%	-0,1 pt

Sources : (1) Caisse d'allocations familiales, (2) Pôle Emploi, (3) DDTEFP (following the reform of February 2009, rough DEFM Category A), (4) Insee
* Data in end of the month unconsolidated
** nov 10



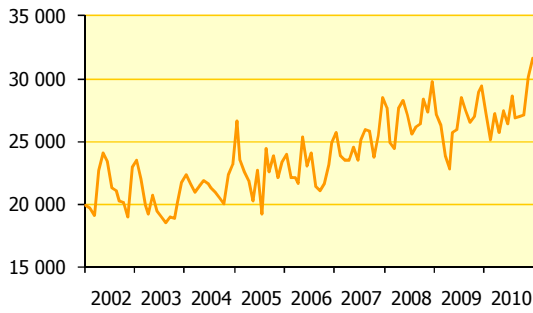
Number of salaried employees	2000	2007	2008	Var. 08/07
Agriculture and fishing*	740	587	339	-42,2%
Industry and energy	2 653	3 151	3 304	4,9%
Construction	2 107	3 332	3 713	11,4%
Trade	3 481	4 358	4 394	0,8%
Other commercial services	6 678	8 482	6 480	-23,6%
Noncommercial services	2 778	4 206	6 551	55,8%
Total	18 437	24 116	24 781	2,8%

Source : Pôle Emploi

*The field of the investigation of the Pôle Emploi not exhaustive, primarily observing the evolution of the employee job in the nonagricultural private sector

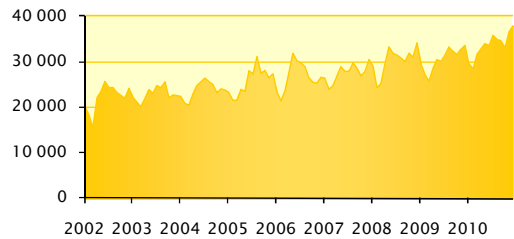
Consumption

Quarterly data



Import duty (thousands of €)	2007	2008	2009	2010	Var. 10/09
Quarter 1	23 555	24 381	23 858	27 186	13,9%
Quarter 2	23 517	27 108	25 958	26 445	1,9%
Quarter 3	25 885	26 414	26 491	26 945	1,7%
Quarter 4	28 456	29 804	29 429	31 577	7,3%
Total	101 413	107 707	105 735	112 153	6,1%

Source: Public Treasury

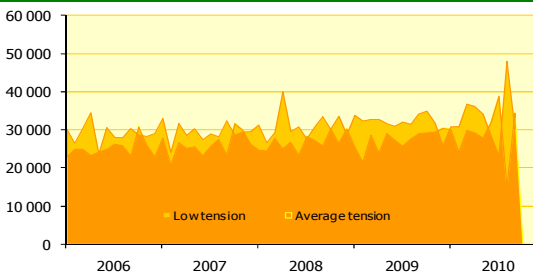


Import : consumption goods (thousands of €)	2007	2008	2009*	2010*	Var. 10/09
Quarter 1	24 962	25 469	25 970	31 838	22,6%
Quarter 2	28 130	32 108	30 297	33 801	11,6%
Quarter 3	28 870	30 243	32 559	34 851	7,0%
Quarter 4	30 745	34 456	33 841	38 170	12,8%
Total	112 708	122 277	122 667	138 660	13,0%

Source: Customs office (*provisional data)

The aggregate nomenclature - NA 2008 - replaces the economic nomenclature of synthesis (NES)

Consumption goods: Textiles, clothing, leather and shoes, medicinal products, manufactured goods various, products of the edition and the communication



Energy consumption Average and low tension cumulated (in millions of kWh)	2007	2008	2009	2010	Var. 10/09
Quarter 1	164 979	164 988	175 566	183 425	4,5%
Quarter 2	161 160	176 461	176 529	188 690	6,9%
Quarter 3	167 096	174 062	181 081	190 552	5,2%
Quarter 4	176 292	180 302	182 512	na	na
Total	669 527	695 813	715 688	562 667	na

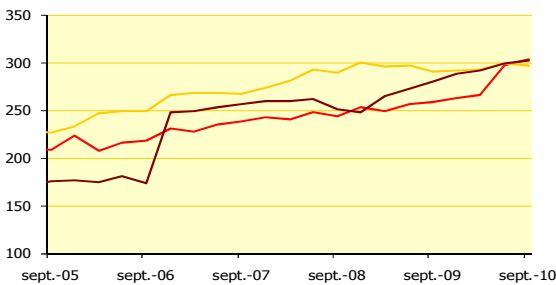
Source: estimations EDF-Guyane

Savings and credits

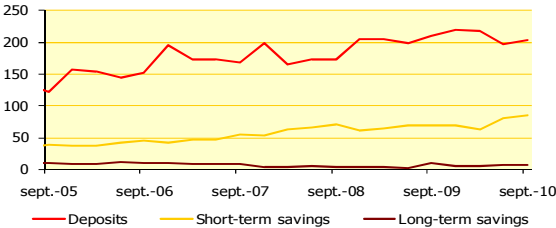
Credit institution installed locally

After reform SURFI of June 2010, the perimeter of the credit institutions installed locally changed. The history is available only starting from March 2005.

Households (thousands of €)



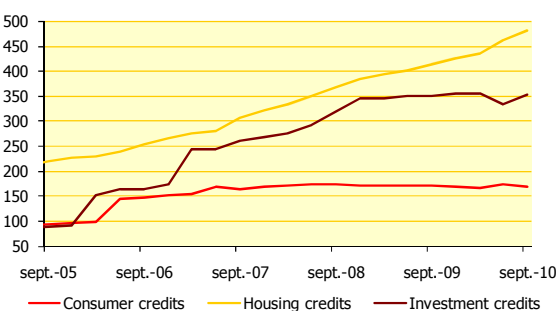
Firms (thousands of €)



Savings evolution		Deposits	Short-term savings	Long-term savings
Households				
2009/ 2008	Quarter 2	3,7%	1,4%	4,1%
	Quarter 3	6,3%	0,6%	11,7%
	Quarter 4	3,9%	-2,9%	16,2%
2010/ 2009	Quarter 1	7,2%	-1,2%	10,1%
	Quarter 2	15,6%	0,7%	10,0%
	Quarter 3	17,0%	2,1%	8,1%
Firms				
2009/ 2008	Quarter 2	14,7%	6,9%	-40,6%
	Quarter 3	21,3%	-2,6%	159,7%
	Quarter 4	6,4%	12,9%	62,7%
2010/ 2009	Quarter 1	6,2%	-2,0%	68,6%
	Quarter 2	-0,8%	16,1%	124,2%
	Quarter 3	-3,3%	24,4%	-24,9%

Source: IEDOM

millions of €



Credits evolution		Households		Firms
		Consumer credits	Housing credits	Investment credits
2009/ 2008	Quarter 2	-0,6%	14,5%	19,6%
	Quarter 3	-1,0%	12,4%	9,8%
	Quarter 4	-0,3%	10,8%	2,9%
2010/ 2009	Quarter 1	-3,7%	11,0%	2,6%
	Quarter 2	0,9%	15,2%	-5,1%
	Quarter 3	-1,2%	16,2%	0,7%

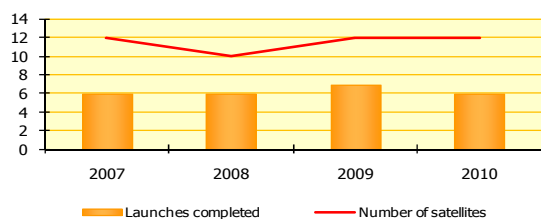
Source: IEDOM

Public Finance

Public finance (millions of €)	2007	2008	2009	Var. 09/08
Public expenditure	983	1048	1075	2,6%
operating expenditure	596	654	630	-3,7%
capital expenditure	54	66	88	32,8%
State intervention	145	138	157	13,8%
special accounts (loans to local authorities)	188	189	200	5,8%
Public revenue	128	159	131	-17,7%
revenue from taxation	110	142	115	-19,1%
Allocation from the State to local authorities	107	111	129	15,9%
Local authorities expenditure	644	766	760	-0,8%
Local authorities revenue	699	837	824	-1,5%
National public institutions budget (1)	341	313	370	18,3%
Expenses from european funds	30	40	42	4,8%
French Guyana's contibution to european budget	3,5	3,6	3,5	-1,4%

Sources : Public Treasury (1) CSG, CCI, EPAG, ONF, CA

Sectoral indicators



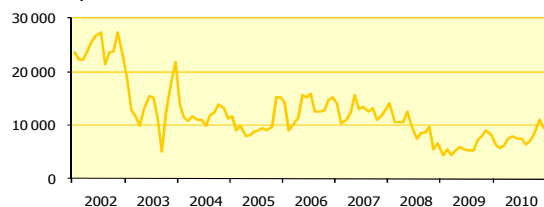
Space

Launching activity progression

	2008	2009	2010
Number of completed launches	6	7	6
Number of satellites	10	12	12

Source : Arianespace

Quarterly data



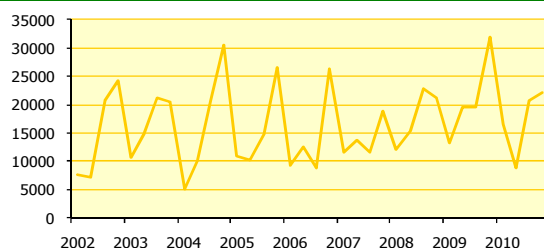
Gold

Gold exports (thousands of €)

	2008	2009*	2010*	Var. 10/09
Quarter 1	10 686	4 320	6 248	44,6%
Quarter 2	9 895	5 597	7 596	35,7%
Quarter 3	8 542	7 183	6 981	-2,8%
Quarter 4	6 616	8 208	9 538	16,2%
Total	35 739	25 309	30 364	20,0%

Source : Customs office

* provisional data



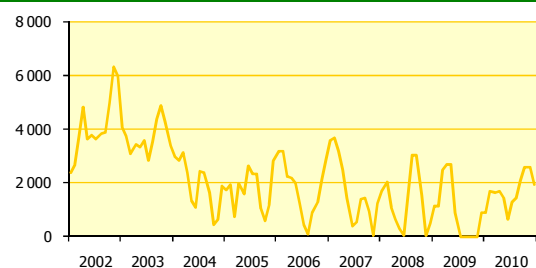
Wood

Barks extracted from the forest (in m³)

	2008	2009	2010*	Var. 10/09
Quarter 1	12 122	13 236	16 555	25,1%
Quarter 2	15 258	19 517	8 791	-55,0%
Quarter 3	22 838	19 613	20 834	6,2%
Quarter 4	21 085	31 905	22 045	-30,9%
Total	71 302	84 271	68 225	-19,0%

Source : Forests National Office

*consolidated data



Rice

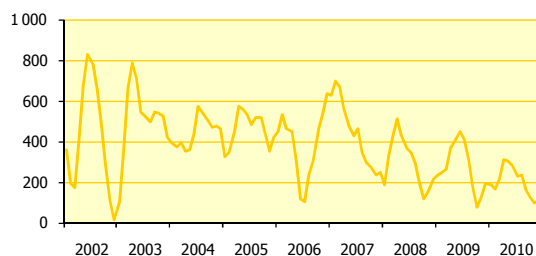
Rice exports (tons)

	2008	2009*	2010*	Var. 10/09
Quarter 1	1 083	2 458	1 633	-33,6%
Quarter 2	21	897	615	-31,5%
Quarter 3	3 024	0	2 063	ns
Quarter 4	463	860	1 915	122,6%
Total	4 591	4 215	6 225	47,7%

Source : Customs office

* provisional data

NB: The absence of export during 3rd quarter 09 is due to the change of management of "Grupo S.O.S" in Madrid; requiring a few months of adaptation to take over the marketing activity. There was only one residual activity of the local sales under various products and/or products.



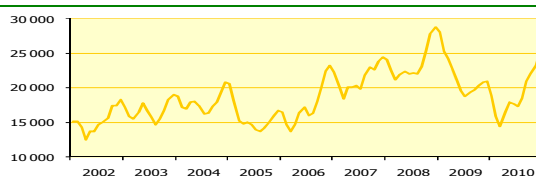
Shrimps

Shrimps exports (tons)

	2008	2009*	2010*	Var. 10/09
Quarter 1	429	264	213	-19,5%
Quarter 2	366	450	286	-36,4%
Quarter 3	191	171	160	-6,3%
Quarter 4	217	190	111	-41,9%
Total	1 203	1 076	770	-28,5%

Source : Customs office

* provisional data



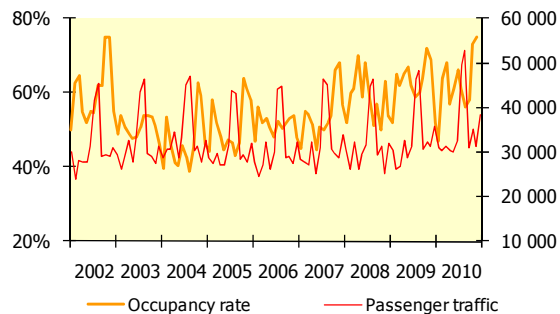
Buildings and public works

Cement sales (tons)

	2008	2009	2010	Var. 10/09
Quarter 1	21 896	22 736	16 455	-27,6%
Quarter 2	22 156	18 751	17 317	-7,6%
Quarter 3	25 296	20 291	22 057	8,7%
Quarter 4	28 113	18 923	25 153	32,9%
Total	97 461	80 701	80 982	0,3%

Source : Cimnet guyanaise

Monthly data



Tourism

	2007	2008	2009	2010 (to nov.)	Var. 10/09 (nov. to nov.)
Hotel's occupancy rate	54,0%	57,5%	62,0%	75,0%	6 pt(s)

	2007	2008	2009	2010 (Σ dec)	Var. 10/09 (Σ dec to Σ dec)
Passenger traffic** at Rochambeau airport (cumulated at December)	386 979	385 142	400 555	423 849	5,8%

Sources : INSEE, CCIJ
** arrived + departures + transits

Structural factors

Population and demography

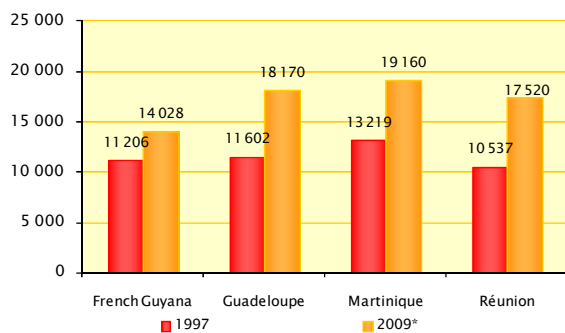
	2007	2008	2009	2010
Population	213 031	219 266	225 751*	232 223*
Birth rate (for 1000 inhabitants)	29,5	28,1	26,9*	nd
Death rate (for 1000 inhabitants)	3,2	3,4	3,1*	nd

Source : INSEE
(*) provisional data

Estimate of population growth

	2015	2030	2040
Population	282 000	442 000	574 000
Under 20 years old (%)	43,0	41,5	40,5
20-59 years old (%)	49,6	47,9	47,3
Over 60 years old (%)	7,4	10,6	12,3

Source : INSEE



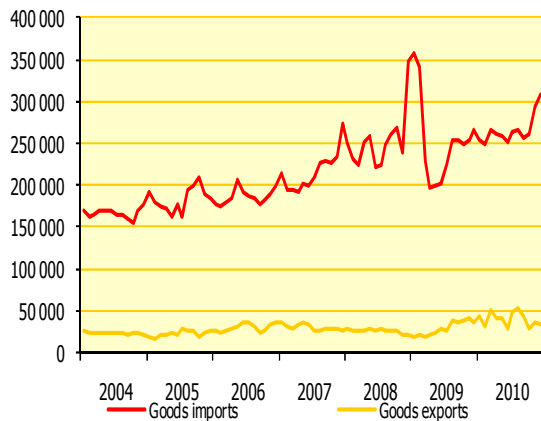
Gross domestic product per capita

	1997	2006	2007	2008*	2009*
French Guyana	11 206	12 716	13 298	13 489	14 028
Guadeloupe	11 602	16 584	17 384	18 244	18 170
Martinique	13 219	18 168	19 205	19 800	19 160
Réunion	10 537	16 434	17 146	18 220	17 520

*CEROM estimate

Source : INSEE

Quarterly data



Foreign Trade (millions of €) (cumulated at December)

	2008	2009*	2010* (Σ Dec.)	Var. Σ Dec. 10/09
Goods exports	100,2	120,0	158,3	31,9%
Agriculture, sylviculture, fishing	0,8	0,9	0,6	-39,1%
Agricultural and food industry products	15,9	14,1	14,8	4,7%
Consumption goods (CG)	1,0	1,4	1,6	10,5%
Equipment goods (EG)	38,7	68,2	88,5	29,8%
Intermediary goods (of which various products)	43,8	35,4	52,8	49,4%
Goods imports	1 055,0	950,1	1081,8	30,2%
Agriculture, sylviculture, fishing	10,2	9,6	12,2	26,7%
Agricultural and food industry products	162,4	146,2	178,7	22,2%
Consumption goods (CG)	122,3	122,7	138,7	13,0%
Equipment goods (EG)	465,4	358,8	402,0	12,0%
Intermediary goods (of which various products and energy)	294,7	312,8	350,3	12,0%
Cover rate	9,5%	12,6%	14,6%	+2 pt(s)

Source : Customs office (*provisional data)

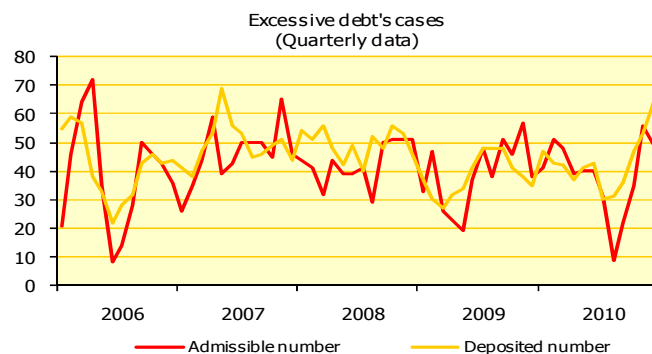
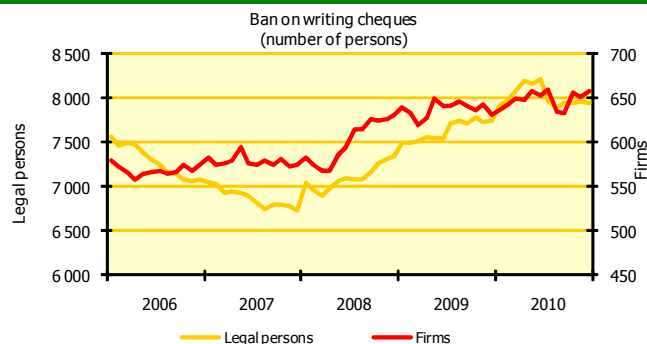
The aggregate nomenclature - NA 2008 - replaces the economic nomenclature of synthesis (ENS)

CG: Textiles, clothing leather and shoes; medicinal products; various manufactured goods; products of the edition and the communication

EG: Data-processing, electronic and optical products; electrical equipment and domestic; agricultural industrial machines and, machines various; means of transport

↑: Growth of imports at the end of 2008 due has a very strong increase in the stations "mean of transport", "industrial machines and agricultural, various machines" and "Produced out of rubber and plastic; various mineral products".
↓: Drop of imports at the beginning of 2009 due has a very strong reduction in the stations "agricultural industrial machines and, various machines" and "natural hydrocarbons and other products of the mining".

Indicators of vulnerability of the households and the companies



Source : IEDOM