



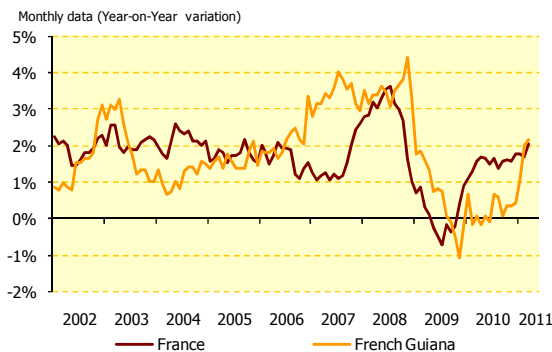
# French Guiana Economic Review



Updated : June 2011

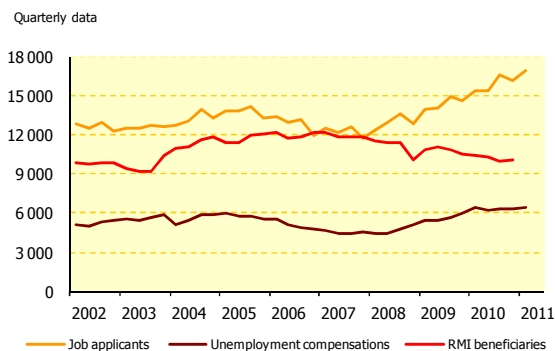
## Macroeconomic indicators

Data non-seasonally adjusted



Price evolution over 12 months	2008	2009	2010	2011	Var. 11/10 in point(s)
<b>French Guiana</b>					
March	3,4%	1,6%	0,1%	2,2%	2,1
June	3,5%	0,8%	-0,1%	na.	ns.
September	3,7%	-0,1%	0,1%	na.	ns.
December	3,3%	-0,2%	0,4%	na.	ns.
<b>France</b>					
March	3,2%	0,3%	1,6%	2,0%	0,4
June	3,6%	-0,5%	1,5%	na.	ns.
September	3,0%	-0,4%	1,6%	na.	ns.
December	1,0%	0,9%	1,8%	na.	ns.

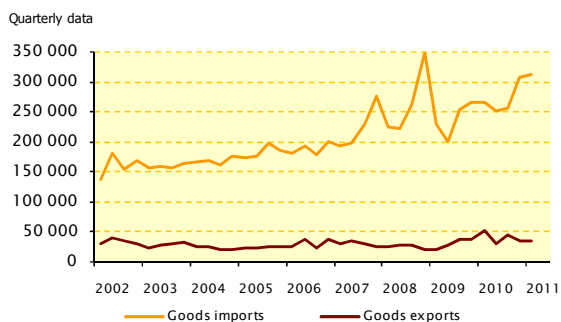
Source : INSEE



Labour market and unemployment (up to March)	2008	2009	2010	2011	Var. 11/10 (March to March)
<b>RMI-RSA (1) *</b> minimum income allowance granted to those with no other source of income					
RMI beneficiaries	11 508	10 864	10 367	15 218	ns.
Cumulated paid amounts (millions of €)	16,1	15,5	15,8	14,5	ns.
Average monthly allowance (in December)	440	446	453	na.	ns.
<b>Worker's compensation insurance (2)</b>					
Unemployed bénéficiaires	4 505	5 516	6 484	6 858	5,77%
<b>Unfulfilled job applications at the end of the month</b>	<b>12 446</b>	<b>13 900</b>	<b>15 388</b>	<b>16 904</b>	<b>9,9%</b>
<b>Unemployment rate (ILO) (4)</b>	<b>21,8%</b>	<b>21,1%</b>	<b>21,0%</b>	<b>na.</b>	<b>ns.</b>

\* The RSA (Revenu de Solidarité Active) was launched in January 2011, replacing the RMI. The amount granted in 2011 is not available

Sources : (1) Caisse d'allocations familiales, (2) Pôle Emploi including files on standby, (3) DIECCTE DEFM Cat A (4) Enquête emploi INSEE of June



Foreign trade - up to March	2008	2009*	2010*	2011*	Var. 11/10
<b>€ Millions</b>	<b>2008</b>	<b>2009*</b>	<b>2010*</b>	<b>2011*</b>	<b>Var. 11/10</b>
<b>Goods exports</b>	<b>25,7</b>	<b>19,1</b>	<b>51,1</b>	<b>35,5</b>	<b>-30,5%</b>
Agriculture, sylviculture, fishing	0,1	0,5	0,2	0,2	9,3%
Food industry products	4,3	3,9	2,9	2,9	2,0%
Consumption goods (CG)	0,1	0,1	0,1	0,6	839,0%
Equipment goods (EG)	9,1	8,8	38,9	20,7	-46,8%
Various products	12,1	5,8	9,1	11,1	22,2%
<b>Goods imports</b>	<b>223,7</b>	<b>230,2</b>	<b>266,1</b>	<b>313,3</b>	<b>17,8%</b>
Agriculture, sylviculture, fishing	2,4	2,6	2,4	3,1	30,6%
Food industry products	39,2	38,7	42,8	49,9	16,4%
Consumption goods (CG)	25,5	26,0	31,8	33,8	6,3%
Equipment goods (EG)	92,4	96,7	100,0	129,1	29,1%
Various products	41,2	36,8	39,8	59,8	50,1%
Oil products	22,9	29,4	49,3	37,7	-23,5%
<b>Covering ratio</b>	<b>11,5%</b>	<b>8,3%</b>	<b>19,2%</b>	<b>11,3%</b>	<b>-7,9 pts</b>

\* Provisional data

Source : Office of customs and border protection

The aggregate nomenclature - NA 2008 - replaces the economic nomenclature of synthesis (ENS)

CG: Textiles, clothing leather and shoes; medicinal products; various manufactured goods; products of edition and communication industries

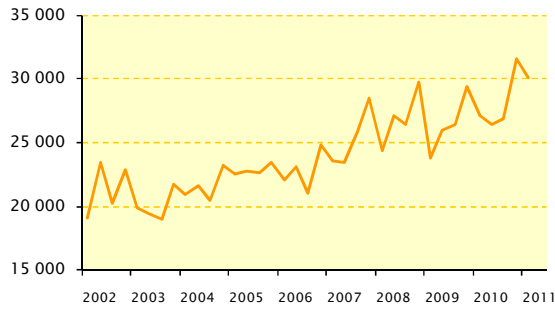
EG: data-processing, electronic and optical products; electrical and domestic equipment; agricultural, industrial and various machines; transport equipment

∇: Late 2008 increase in imports due to highly sustained growths in the areas of: "logistic equipments", "industrial, agricultural and other machines", and "plastic, rubber and other mineral goods".

∨: Slight drop in imports in early 2009 due to strong decreases in the fields of: "industrial, agricultural and other machines" and "natural hydrocarbons and other mining goods".

## Consumption

Quarterly data

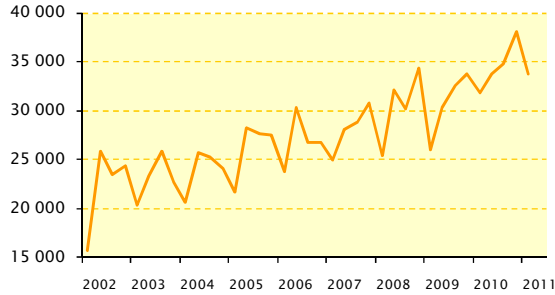


### Custom tariffs and tax

€ Thousands	2008	2009	2010	2011	Var. 11/10
Quarter 1	24 381	23 858	27 186	30 139	10,9%
Quarter 2	27 108	25 958	26 445	na.	ns.
Quarter 3	26 414	26 491	26 954	na.	ns.
Quarter 4	29 804	29 429	31 577	na.	ns.
<b>Total</b>	<b>107 707</b>	<b>105 735</b>	<b>112 162</b>	<b>30 139</b>	ns.

Source : Office of customs and border protection

Quarterly data



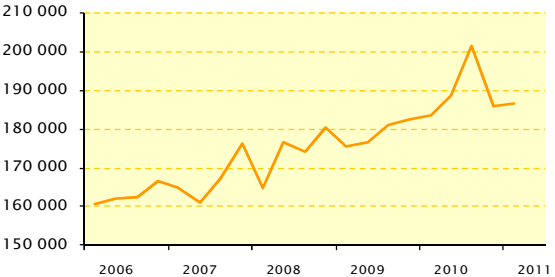
### Imports of consumption goods

€ Thousands	2008	2009 *	2010 *	2011 *	Var. 11/10
Quarter 1	25 469	25 970	31 838	33 848	6,3%
Quarter 2	32 108	30 297	33 801	na.	ns.
Quarter 3	30 243	32 559	34 851	na.	ns.
Quarter 4	34 456	33 841	38 203	na.	ns.
<b>Total</b>	<b>122 277</b>	<b>122 667</b>	<b>138 660</b>	<b>33 848</b>	ns.

\* Provisional data

Source : Office of customs and border protection

Quarterly data



### Electric energy consumption Middle and low tension cumulated

KWh Millions	2008	2009	2010	2011	Var. 11/10
Quarter 1	164 988	175 566	183 425	186 473	1,7%
Quarter 2	176 461	176 529	188 690	na.	ns.
Quarter 3	174 062	181 081	201 475	na.	ns.
Quarter 4	180 302	182 512	185 863	na.	ns.
<b>Total</b>	<b>695 813</b>	<b>715 688</b>	<b>759 453</b>	<b>186 473</b>	ns.

\* Provisional data

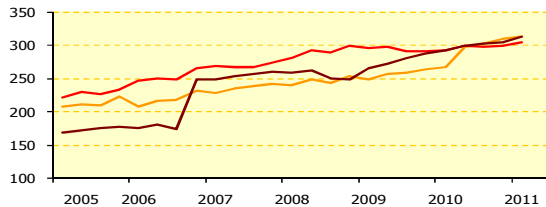
Source : EDF

## Savings and credits

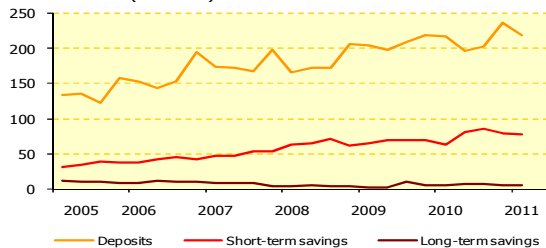
Local or out of the market credit institutions

Following the June 2010 SURFI reform, the local credit institutions' scope has been adapted. The historical data are only available starting from March 2005.

### Households (€ Millions)



### Businesses (€ Millions)

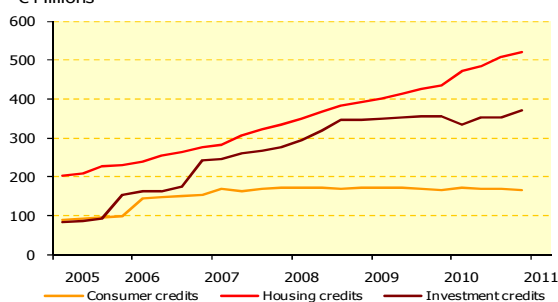


### Savings evolution

		Deposits	Short-term savings	Long-term savings	
<b>Households</b>	2010/ 2009	Quarter 1	7,2%	-1,2%	10,1%
		Quarter 2	15,6%	0,7%	10,0%
		Quarter 3	17,0%	2,1%	8,1%
		Quarter 4	17,8%	2,5%	5,6%
2011/ 2010	Quarter 1	17,4%	4,2%	7,0%	
<b>Businesses</b>	2010/ 2009	Quarter 1	6,2%	-2,0%	68,6%
		Quarter 2	-0,8%	16,1%	124,2%
		Quarter 3	-3,3%	24,4%	-24,9%
		Quarter 4	7,9%	13,7%	2,8%
2011/ 2010	Quarter 1	1,0%	22,7%	19,9%	

Source : IEDOM

€ Millions



### Credits evolution

		Households	Businesses	
		Consumer credits	Housing credits	Investment credits
2010/ 2009	Quarter 1	-3,7%	11,0%	2,6%
	Quarter 2	0,9%	17,7%	-5,1%
	Quarter 3	-1,2%	16,9%	0,7%
	Quarter 4	-0,4%	19,7%	-0,9%
2011/ 2010	Quarter 1	0,5%	19,3%	3,9%

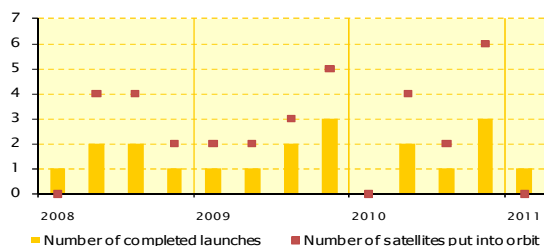
Source : IEDOM

# Government Spendings & Revenues

Government Spendings & Revenues				
€ Millions	2007	2008	2009	Var. 09/08
<b>Public expenditure</b>	<b>983</b>	<b>1048</b>	<b>1075</b>	<b>2,6%</b>
operating expenditure	596	654	630	-3,7%
capital expenditure	54	66	88	32,8%
State Interventions	145	138	157	13,8%
special accounts (loans to local authorities)	188	189	200	5,8%
<b>Public revenue</b>	<b>128</b>	<b>159</b>	<b>131</b>	<b>-17,7%</b>
revenue from taxation	110	142	115	-19,1%
<b>Allocation from the State to local authorities</b>	<b>107</b>	<b>111</b>	<b>129</b>	<b>15,9%</b>
<b>Local authorities's expenditure</b>	<b>644</b>	<b>766</b>	<b>760</b>	<b>-0,8%</b>
<b>Local authorities's revenue</b>	<b>699</b>	<b>837</b>	<b>824</b>	<b>-1,5%</b>
<b>National public bodies' budget (1)</b>	<b>341</b>	<b>313</b>	<b>370</b>	<b>18,3%</b>
<b>Expenses from European funds</b>	<b>30</b>	<b>40</b>	<b>42</b>	<b>4,8%</b>
<b>French Guiana's contribution to European budget</b>	<b>3,5</b>	<b>3,6</b>	<b>3,5</b>	<b>-1,4%</b>

Sources : Treasury (1)CSG, CCGIG, EPAG, ONF, CA

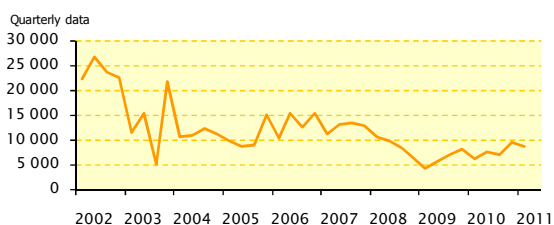
## Sector indicators



### Space Industry

Launching activity				
	2008	2009	2010	2011
<b>Number launches</b>				
Quarter 1	1	1	0	1
Quarter 2	2	1	2	
Quarter 3	2	2	1	
Quarter 4	1	3	3	
<b>Total</b>	<b>6</b>	<b>7</b>	<b>6</b>	
<b>Number of satellites launched into orbit</b>				
Quarter 1	0*	2	0	0*
Quarter 2	4	2	4	
Quarter 3	4	3	2	
Quarter 4	2	5	6	
<b>Total</b>	<b>10</b>	<b>12</b>	<b>12</b>	

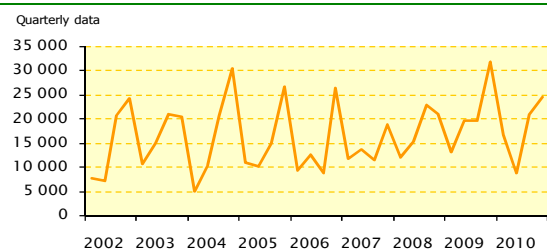
\* 1 ATV (Automated transfer vehicle) put into orbit  
Source : Ariespace



### Gold

Gold exports					
Thousands of €	2008	2009*	2010*	2011	Var. 11/10
Quarter 1	10 686	4 320	6 248	8 813	41,0%
Quarter 2	9 895	5 597	7 596	na.	ns.
Quarter 3	8 542	7 183	6 981	na.	ns.
Quarter 4	6 616	8 208	9 538	na.	ns.
<b>Total</b>	<b>35 739</b>	<b>25 309</b>	<b>30 364</b>	<b>8 813</b>	<b>ns.</b>

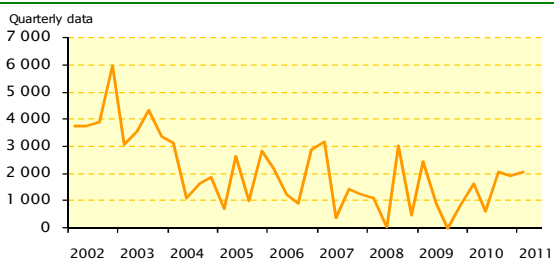
\* Provisional data  
Source : Customs Office



### Wood

Logs extracted from the forest				
M3	2008	2009	2010*	Var. 10/09
Quarter 1	12 122	13 236	16 555	25,1%
Quarter 2	15 258	19 517	8 791	-55,0%
Quarter 3	22 838	19 613	20 834	6,2%
Quarter 4	21 085	31 905	22 045	-30,9%
<b>Total</b>	<b>71 302</b>	<b>84 271</b>	<b>68 225</b>	<b>-19,0%</b>

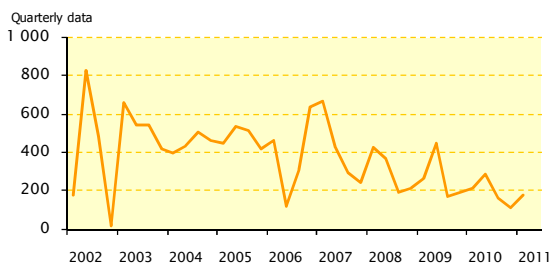
\*consolidated data  
Source : National Forest Office



### Rice

Rice exports					
Tons	2008	2009*	2010*	2011*	Var. 11/10
Quarter 1	1 083	2 458	1 633	2 054	25,8%
Quarter 2	21	897	615	na.	ns.
Quarter 3	3 025	0	2 063	na.	ns.
Quarter 4	463	860	1 915	na.	ns.
<b>Total</b>	<b>4 592</b>	<b>4 215</b>	<b>6 225</b>	<b>2 054</b>	<b>ns.</b>

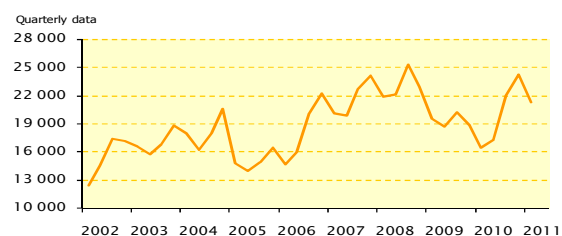
\*Provisional data  
Source : Customs Office  
NB: The absence of export during Q3 09 is due to the change of management of "Grupo S.O.S" in Madrid; requiring a few months of adaptation to take over the marketing activity. There was only one residual activity of the local sales of various products.



### Shrimps

Shrimps exports					
Tons	2008	2009*	2010*	2011*	Var. 10/09
Quarter 1	429	264	213	177	-16,8%
Quarter 2	366	450	286	na.	ns.
Quarter 3	191	171	160	na.	ns.
Quarter 4	217	190	111	na.	ns.
<b>Total</b>	<b>1 203</b>	<b>1 076</b>	<b>770</b>	<b>177</b>	<b>ns.</b>

\* Provisional data  
Source : Customs Office

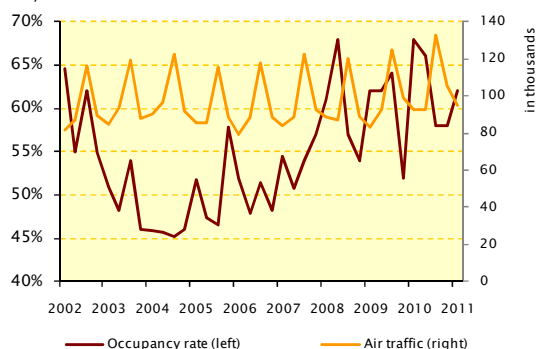


### Construction industry

Cement sales					
Tons	2008	2009	2010	2011	Var. 10/09
Quarter 1	21 894	19 561	16 455	21 340	29,7%
Quarter 2	22 153	18 736	17 299	na.	ns.
Quarter 3	25 293	20 230	21 980	na.	ns.
Quarter 4	22 898	18 790	24 275	na.	ns.
<b>Total</b>	<b>92 238</b>	<b>77 317</b>	<b>80 009</b>	<b>21 340</b>	<b>ns.</b>

Source : Ciment guyanais

Quarterly data



## Tourism

	2008	2009	2010	2011	Var. 11/10
<b>Hotels' occupancy rate</b>					
Quarter 1	61%	62%	68%	62%	- 6 pts
Quarter 2	68%	62%	66%		
Quarter 3	57%	64%	58%		
Quarter 4	54%	52%			
<b>Passenger traffic at Cayenne airport *</b>					
Quarter 1	89 045	83 267	92 817	94 912	2,3%
Quarter 2	87 139	92 845	93 016		
Quarter 3	120 400	125 147	133 107		
Quarter 4	88 591	99 296	104 909		
<b>Total</b>	<b>385 175</b>	<b>400 555</b>	<b>423 849</b>		

\* arrivals + departures + transits  
Sources : INSEE , CCIRG

## Structural factors

### Population and demography

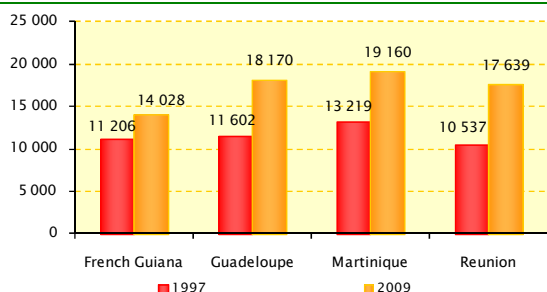
	2007	2008	2009	2010
Population	213 031	219 266	225 751*	232 223*
Birth rate (for 1000 inhabitants)	29,5	28,1	26,9*	nd.
Death rate (for 1000 inhabitants)	3,2	3,4	3,1*	nd.

\* Provisional data  
Source : INSEE

### Estimates of population growth

	2015	2030	2040
Population	282 000	442 000	574 000
Under 20 years (%)	43,0	41,5	40,5
From 20 to 59 years (%)	49,6	47,9	47,3
Over 60 years (%)	7,4	10,6	12,3

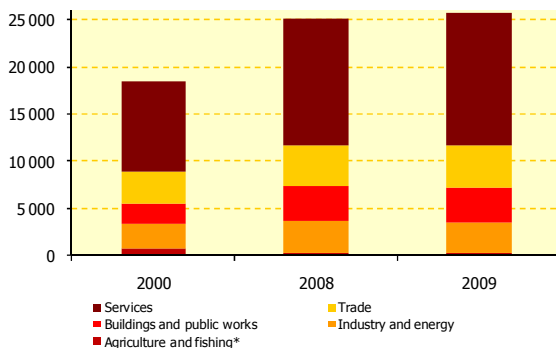
Source : INSEE



### Gross domestic product per capita (current value)

	1997	2007	2008 *	2009 *
French Guiana	11 206	13 489	13 739	14 028
Guadeloupe	11 602	18 244	18 680	18 170
Martinique	13 219	19 800	20 070	19 160
Reunion	10 537	17 325	18 304	17 639

\* CEROM Estimate  
Source : INSEE



### Number of workers

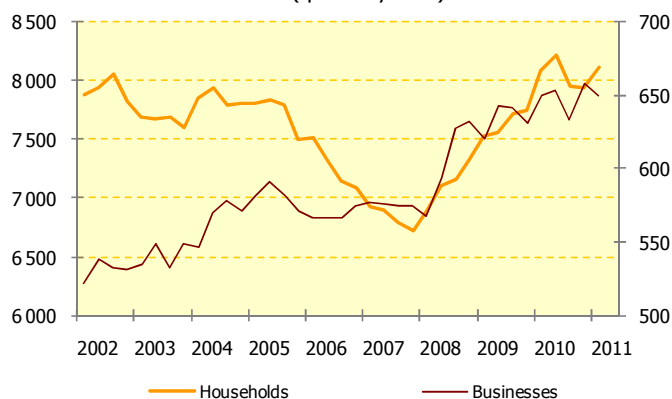
	2000	2008	2009	Var. 09/08
Agriculture and fishing*	740	339	275	-18,9%
Industry and energy	2 653	3 304	3 223	-2,5%
Construction industry	2 107	3 713	3 697	-0,4%
Trade	3 481	4 394	4 524	3,0%
Services	9 456	13 284	13 993	5,3%
<b>Total</b>	<b>18 437</b>	<b>24 781</b>	<b>25 712</b>	<b>3,8%</b>

Source : Pôle Emploi

\* The sample use by Pôle Emploi as a basis for this survey is not exhaustive: indeed, the non-agricultural private sector was disregarded from the sampling process.

## Indicators of vulnerability of the households and the businesses

### Ban on writing cheques (quarterly data)



Source: IEDOM

### Over indebtedness cases (quarterly data)

