

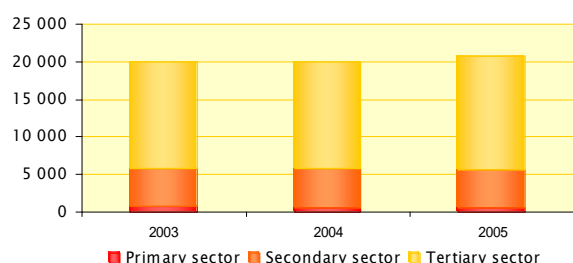


# Economic scoreboard of French Guyana



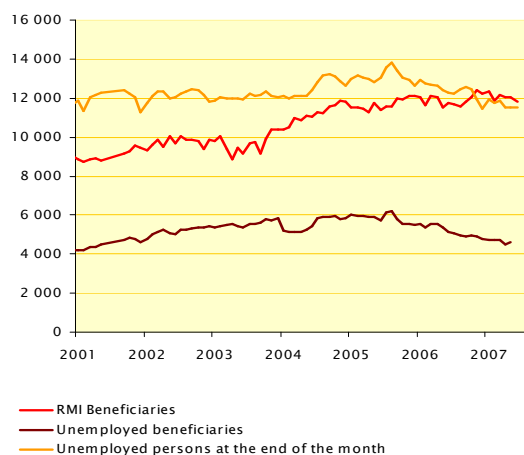
Updated : October 2007

## Employment, wages, prices

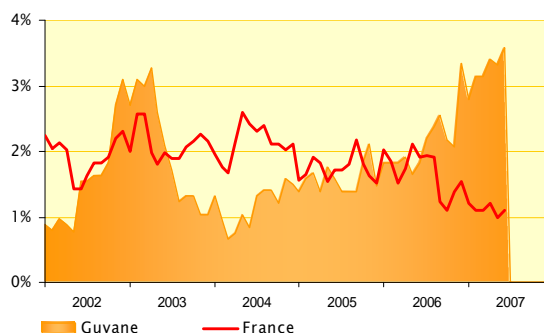


Number of salaried employees	2003	2004	2005	Var. 05/04
Primary sector	785	671	624	-7,0%
Secondary sector	5 060	5 056	5 087	0,6%
<i>constructions</i>	2 393	2 446	2 336	-4,5%
<i>intermediaries goods industries</i>	1 309	1 245	1 297	4,2%
Tertiary sector	14 112	14 253	14 951	4,9%
<i>services firms</i>	3 228	3 499	3 853	10,1%
<i>education, health, welfare</i>	1 892	2 046	2 298	12,3%
<b>Total</b>	<b>19 957</b>	<b>19 980</b>	<b>20 662</b>	<b>3,4%</b>

Source: Assédic



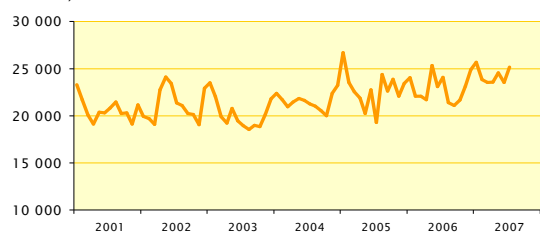
Sources : Caisse d'allocations familiales (1), Assédic (2), DDTEFP (3), Insee (4)



Source : INSEE

## Consumption

Year over year term

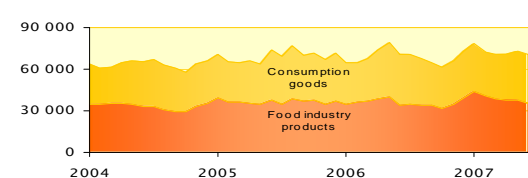


Import duty (thousands of €)

	2005	2006	2007	var. 07/06
Quarter 1	22 526	22 078	23 555	6,7%
Quarter 2	22 749	23 096	23 517	1,8%
Quarter 3	22 613	21 081	na	na
Quarter 4	23 424	24 896	na	na

Source: Public Treasury

Year over year term

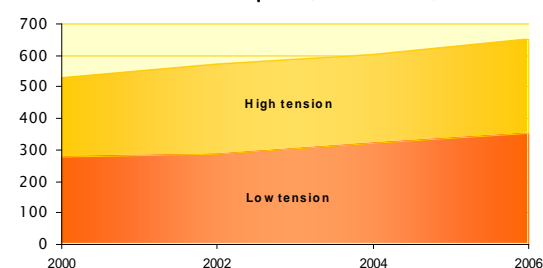


Importations: consumption goods, food industry products

(thousands of €)	2005	2006	2007	Var. 07/06
Quarter 1	64 401	67 454	70 404	4,4%
Quarter 2	73 742	70 832	70 824	0,0%
Quarter 3	69 674	64 463	na	na
Quarter 4	71 315	72 752	na	na

Source: Customs office

Electric consumption (millions of kWh)



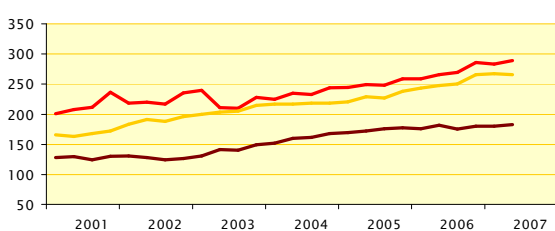
Energy consumption (in millions of kWh and tons)

	2004	2005	2006	Var. 06/05
<b>Electric consumption</b>	<b>605</b>	<b>647</b>	<b>653</b>	<b>0,9%</b>
Low tension : private persons and craft industry	322	na	351	na
High tension : industries, administrations, service sector firms	283	na	302	na
<b>Hydrocarbone consumption</b>	<b>208 206</b>	<b>214 934</b>	<b>180 114</b>	<b>-16,2%</b>
whose fuel oil / EDF gaz	72 985	77 265	45 938	-40,5%
whose petrol / diesel	82 134	82 684	83 058	0,5%
<b>Hydraulic part in electric production</b>	<b>56,92%</b>	<b>59,64%</b>	<b>74,00%</b>	<b>+14,36pts</b>

Source: EDF-Guyane, DRIE

## Saving and credits

Households (thousands of €)

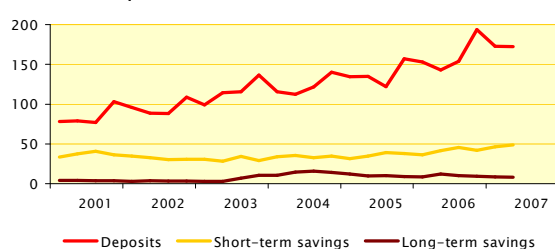


Saving evolution

	Deposits	Short-term savings	Long-term savings
<b>Households</b>			
2006/2005			
Quarter 1	5,9%	10,4%	3,8%
Quarter 2	6,5%	8,4%	5,7%
Quarter 3	8,5%	10,4%	-0,5%
Quarter 4	10,5%	11,4%	1,6%
2007/2006			
Quarter 1	9,4%	9,9%	2,3%
Quarter 2	8,9%	7,2%	0,4%
<b>Non-financial companies</b>			
2006/2005			
Quarter 1	13,8%	15,7%	-30,7%
Quarter 2	6,0%	19,5%	27,2%
Quarter 3	26,1%	16,3%	-1,8%
Quarter 4	23,4%	11,0%	7,6%
2007/2006			
Quarter 1	13,1%	27,1%	3,3%
Quarter 2	20,6%	17,3%	-34,1%

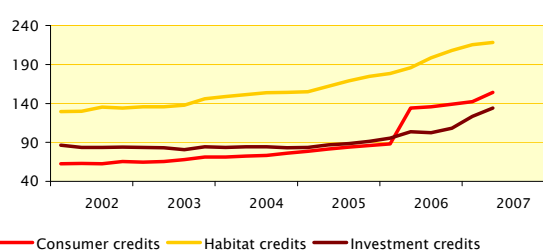
Source: IEDOM

Non-financial companies (thousands of €)



Source: IEDOM

millions of €

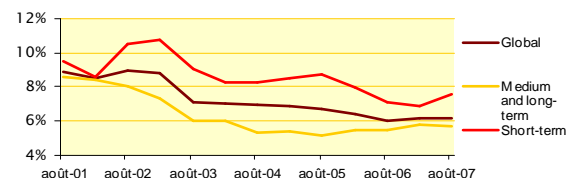


Credits evolution

	Households		Firms
	Consumer credits	Habitat credits	Investment credits
2006/2005			
Quarter 1	12,1%	15,0%	14,2%
Quarter 2	12,1%	14,7%	8,8%
Quarter 3	10,2%	17,5%	4,3%
Quarter 4	10,2%	19,1%	7,2%
2007/2006			
Quarter 1	11,3%	20,8%	32,0%*
Quarter 2	15,1%	17,5%	29,0%*

\* By reason of the integrating of a financial house items

Source: IEDOM



Trade credit cost

	ST	MT and LT	Global
2007 - February	6,90%	5,76%	6,18%
2007 - August	7,58%	5,72%	6,17%

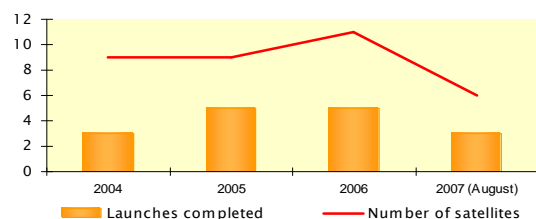
Source: IEDOM

## Public Finance

Public finance ( millions of €)	2004	2005	2006	Var. 06 / 05
<b>State expenditure</b>	<b>763</b>	<b>879</b>	<b>934</b>	<b>6,2%</b>
<i>functioning</i>	480	586	576	-1,8%
<i>capital expenditure</i>	35	42	55	33,3%
<i>interventions</i>	124	128	133	3,3%
<i>special accounts (loans to local authorities)</i>	120	123	171	38,2%
<b>State revenue</b>	<b>126</b>	<b>138</b>	<b>145</b>	<b>5,0%</b>
<i>revenue from taxation</i>	104	116	112	-3,5%
<b>Attributions from State to local authorities</b>	<b>84</b>	<b>93</b>	<b>na</b>	<b>na</b>
<b>Local authorities expenditure</b>	<b>618</b>	<b>594</b>	<b>na</b>	<b>na</b>
<b>Local authorities revenue</b>	<b>584</b>	<b>663</b>	<b>na</b>	<b>na</b>
<b>National public institutions budget</b>	<b>264</b>	<b>261</b>	<b>342</b>	<b>31,0%</b>
<b>Expenses from european funds</b>	<b>65</b>	<b>53</b>	<b>33</b>	<b>-36,9%</b>
<b>French Guyana's contribution to european budget</b>	<b>3</b>	<b>3</b>	<b>3</b>	<b>-5,5%</b>

Sources : Public Treasury (1)CSG, CCIG, EPAG, ONF, CA

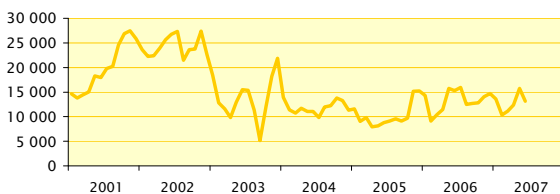
## Sectoriel indicators



Launching activity progression	2004	2005	2006	2007 (August)
Launches completed	3	5	5	3
Number of satellites	9	9	11	6

Source : Arianespace

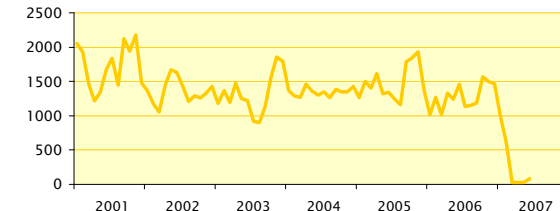
Year over year term



Gold exports (thousands of €)	2005	2006	2007	Var. 07/06
Quarter 1	9 817	10 397	11 105	6,8%
Quarter 2	8 789	15 291	13 117	-14,2%
Quarter 3	9 107	12 657	na	na
Quarter 4	15 187	14 664	na	na

Source : Customs office

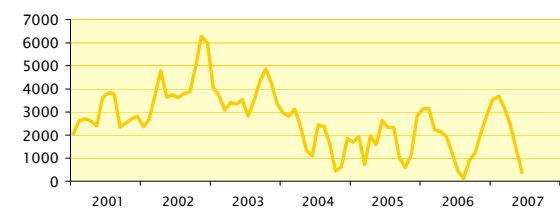
Year over year term



Wood exports (thousands of €)	2005	2006	2007	Var. 07/06
Quarter 1	1 402	1 020	25	-98%
Quarter 2	1 343	1 458	83	-94%
Quarter 3	1 788	1 183	na	na
Quarter 4	1 364	1 463	na	na

Source : Customs office

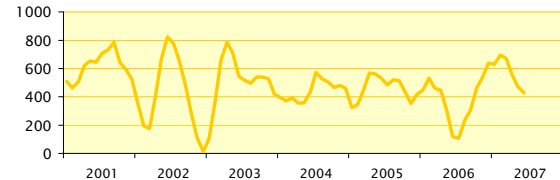
Year over year term



Rice exports (thousands of €)	2005	2006	2007	Var. 07/06
Quarter 1	724	2 207	3 179	44%
Quarter 2	2 634	1 240	364	-71%
Quarter 3	1 011	888	na	na
Quarter 4	2 831	2 876	na	na

Source : Customs office

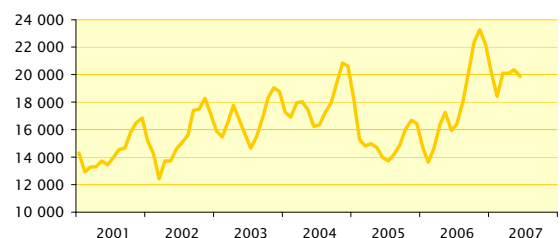
Year over year term



Shrimps exports (thousands of €)	2005	2006	2007	Var. 07/06
Quarter 1	450	462	671	45%
Quarter 2	533	119	428	261%
Quarter 3	515	306	na	na
Quarter 4	419	637	na	na

Source : Customs office

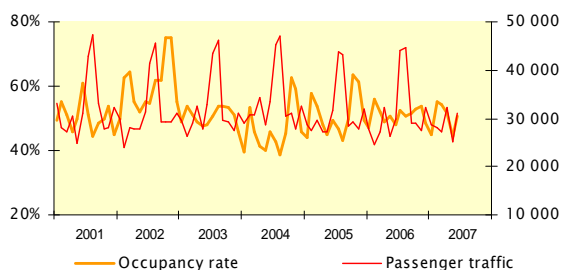
Year over year term



### Buildings and public works

Cement sales (tons)	2005	2006	2007	Var. 07/06
Quarter 1	14 818	14 676	20 095	36,9%
Quarter 2	13 962	15 929	19 868	24,7%
Quarter 3	14 871	20 084	na	na
Quarter 4	16 441	22 215	na	na

Source : Ciment guyanais



## Tourism

	2005	2006	2007 (June)	Var. 07/06
Hotel's occupancy rate	50,9%	51,7%	50,8%	na
Passenger traffic at Rochambeau airport	375 844	374 394	172 337	na

Sources : INSEE , CCIG

## Goods transportation

	Air freight (tons)				Sea freight (tons)			
	2004	2005	2006	Var. 06/05	2004	2005	2006	Var. 06/05
Unloaded freight	3 406	3 792	3 609	-4,8%	557 861	546 433	540 362	-1,1%
Loaded freight	995	1 229	1 294	5,3%	37 965	29 555	36 409	23,2%
<b>Total</b>	<b>4 401</b>	<b>5 021</b>	<b>4 903</b>	<b>-2,4%</b>	<b>595 826</b>	<b>575 988</b>	<b>576 771</b>	<b>0,1%</b>

Source : CCIG, DDE

## Structural factors

### Population and demography

	2003	2004	2005
Population (p)	178 347	184 489	198 000
Birth rate (for 1000 inhabitants)	30,6	28,4	30,4
Death rate (for 1000 inhabitants)	3,8	4,0	3,6

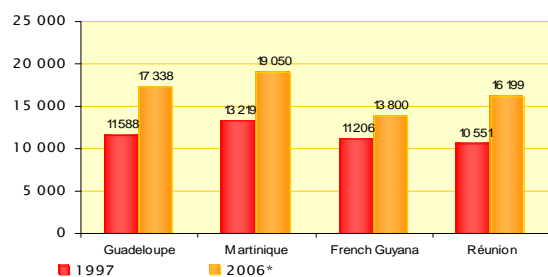
Source : INSEE

(p) provisional data

### Estimate of population growth

	2000	2010	2020	2030
Population	161 561	222 093	307 238	425 520
Under 15 years old (%)	35,6	34,0	33,7	34,0
15-60 years old (%)	58,7	58,8	57,0	55,1
Over 60 years old (%)	5,7	7,2	9,3	10,9

Source : INSEE

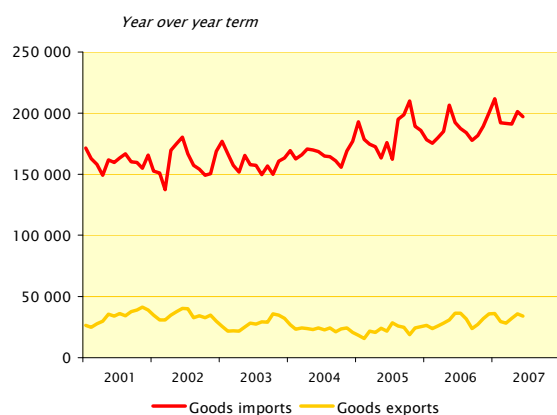


### Gross domestic product per capita

	1997	2002	2003	2006*
Guadeloupe	11 588	14 108	14 616	17 338
Martinique	13 219	15 622	16 370	19 050
French Guyana	11 206	13 079	12 375	13 800
Réunion	10 551	13 300	13 434	16 199

\* Estimation CEROM

Source : INSEE

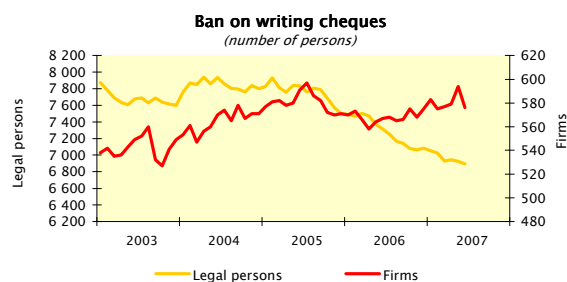


### Foreign Trade (millions of €)

	2004	2005	2006	Var. 06/05	% 2006
<b>Goods exports</b>	<b>90,5</b>	<b>93,7</b>	<b>122,1</b>	<b>30,4%</b>	
Agriculture, sylviculture, fishing	0,4	0,6	1,2	102,6%	1,0%
Agricultural and food industry products	13,4	13,2	12,9	-2,4%	10,6%
Consumption goods	2,4	1,2	1,0	-19,0%	0,8%
Motors	5,5	11,2	19,7	76,7%	16,1%
Equipment goods	14,3	20,6	28,9	40,2%	23,7%
Intermediaries goods	54,5	46,8	58,2	24,3%	47,7%
<b>Goods imports</b>	<b>672,1</b>	<b>734,8</b>	<b>749,7</b>	<b>2,0%</b>	
Agriculture, sylviculture, fishing	8,4	8,8	9,5	7,6%	1,3%
Agricultural and food industry products	132,8	147,3	143,8	-2,4%	19,2%
Consumption goods	120,8	131,9	131,6	-0,2%	17,6%
Motors	104,7	103,0	100,8	-2,2%	13,4%
Equipment goods	118,4	125,5	138,4	10,3%	18,5%
Intermediaries goods	119,7	121,9	131,4	7,8%	17,5%
Combustible and fuel	66,5	94,9	92,8	-2,2%	12,4%
Various products	0,8	1,4	1,3	-5,4%	0,2%
<b>Cover ratio</b>	<b>13,5%</b>	<b>12,7%</b>	<b>16,3%</b>	<b>+3,6 pts</b>	

Source : Customs office

## Indicators of households vulnerability



Source : IEDOM

