

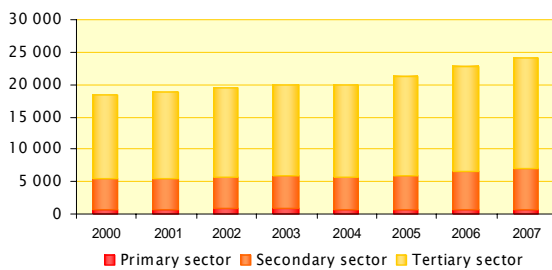


# Economic scoreboard of French Guyana



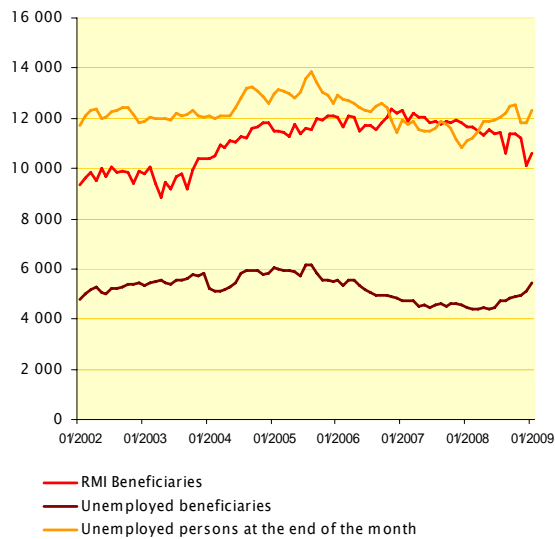
Updated : June 2009

## Employment, wages, prices

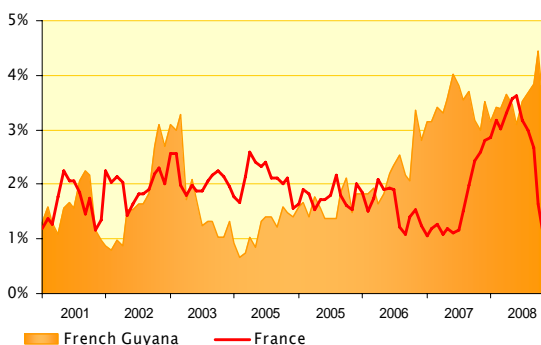


Number of salaried employees	2005	2006	2007	Var. 07/06
Primary sector	645	643	587	-8,7%
Secondary sector	5 268	5 987	6 483	8,3%
<i>construction</i>	2 440	2 960	3 332	12,6%
<i>intermediary goods industries</i>	1 354	1 500	1 546	3,1%
Tertiary sector	15 326	16 048	17 046	6,2%
<i>services to firms</i>	3 823	3 921	4 393	12,0%
<i>education, health, social engagement</i>	2 411	2 850	2 840	-0,4%
<b>Total</b>	<b>21 239</b>	<b>22 678</b>	<b>24 116</b>	<b>6,3%</b>

Source: Pôle Emploi



Sources : Caisse d'allocations familiales (1), Pôle Emploi (2), DDTFP (3), INSEE : according to the new european definition (4)

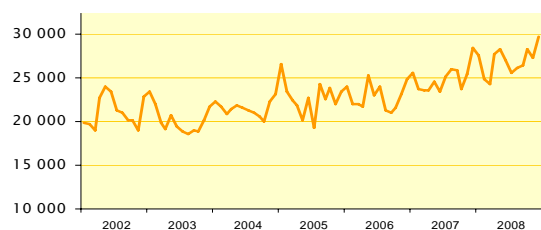


Sources : Caisse d'allocations familiales (1), Pôle Emploi (2), DDTFP (3), INSEE : according to the new european definition (4)

Source : INSEE

# Consumption

Year over year term

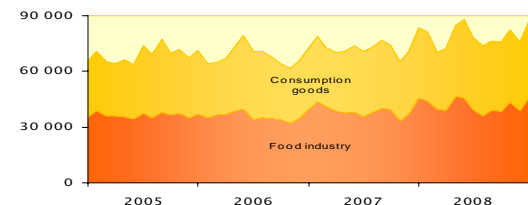


## Import duty (thousands of €)

	2006	2007	2008	Var. 08/07
Quarter 1	22 078	23 555	24 381	3,5%
Quarter 2	23 096	23 517	27 108	15,3%
Quarter 3	21 081	25 885	26 414	2,0%
Quarter 4	24 896	28 456	29 804	4,7%

Source: Public Treasury

Year over year term

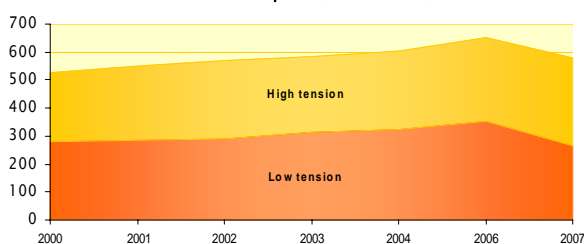


## Import : consumption goods, food industry and agricultural products

(thousands of €)	2006	2007	2008	Var. 08/07
Quarter 1	67 454	70 417	72 348	2,7%
Quarter 2	70 832	71 030	78 247	10,2%
Quarter 3	64 463	74 298	75 771	2,0%
Quarter 4	72 752	83 529	86 252	3,3%

Source: Customs office

## Electric consumption (millions of kWh)



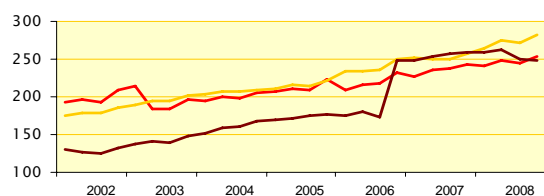
## Energy consumption (in millions of kWh and tons)

	2006	2007	2008	Var. 08/07
<b>Electric consumption</b>	<b>653</b>	<b>582</b>	<b>na</b>	<b>na</b>
Low tension : private persons and craftsmen	351	266	na	na
High tension : industries, administration, service sector firms	302	351	na	na
<b>Hydrocarbon consumption</b>	<b>180 114</b>	<b>195 695</b>	<b>203 580</b>	<b>4%</b>
whose fuel oil / EDF gaz	45 938	62 236	65 721	5,6%
whose petrol / diesel	83 058	85 141	81 529	-4,2%
<b>Hydraulic part in electric production</b>	<b>74%</b>	<b>67%</b>	<b>67%</b>	<b>0 point</b>

Sources: EDF-Guyane, DRIRE

# Savings and credits

## Households (thousands of €)



## Savings evolution

	Deposits	Short-term savings	Long-term savings *	
<b>Households</b>				
2007/2006	Quarter 3	9,2%	6,4%	47,8%
	Quarter 4	4,7%	2,5%	4,7%
	Quarter 1	5,6%	4,6%	4,3%
	Quarter 2	5,2%	9,8%	3,1%
2008/2007	Quarter 3	2,4%	8,4%	-2,3%
	Quarter 4	3,6%	9,9%	-4,4%

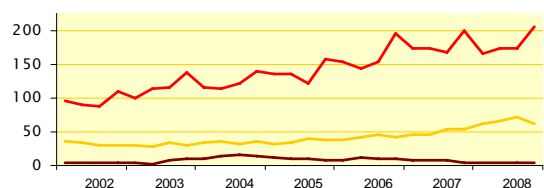
## Non-financial companies

2007/2006	Quarter 3	10,0%	19,2%	-19,8%
	Quarter 4	1,8%	25,5%	-54,7%
	Quarter 1	-4,8%	34,2%	-50,6%
	Quarter 2	-0,3%	39,5%	-40,7%
2008/2007	Quarter 3	3,2%	31,3%	-49,4%
	Quarter 4	3,4%	16,4%	-23,3%

Source: IEDOM

\* because of more exhaustive collection

## Non-financial companies (thousands of €)



— Deposits — Short-term savings — Long-term savings \*

## Credits evolution

	Households	Firms		
	Consumer credits	Habitat credits	Investment credits *	
2007/2006	Quarter 3	8,2%	21,4%	36,9%
	Quarter 4	9,3%	22,0%	35,9%
	Quarter 1	8,8%	22,7%	11,6%
	Quarter 2	1,0%	27,3%	14,7%
2008/2007	Quarter 3	6,1%	22,4%	13,4%
	Quarter 4	1,2%	21,2%	11,6%

\* By reason of the integrating of a financial house items

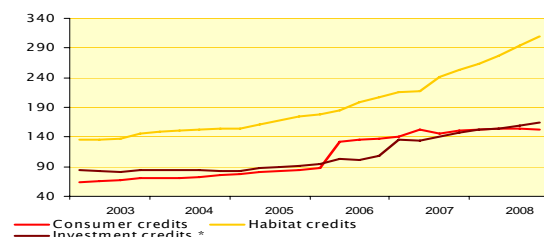
Source: IEDOM

## Cost of credit to firms

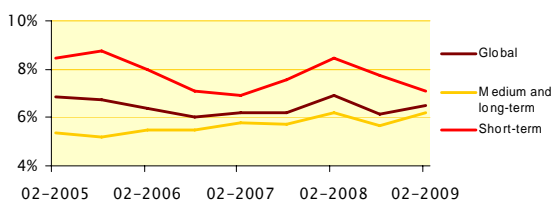
	ST	MT and LT	Global
2008 - August	7,72%	5,68%	6,13%
2009 - February	7,06%	6,18%	6,50%

Source: IEDOM

millions of €



— Consumer credits — Investment credits \* — Habitat credits

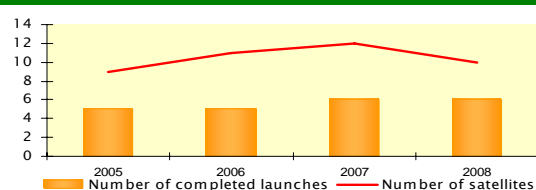


## Public Finance

Public finance ( millions of €)	2005	2006	2007	Var. 07/06
<b>State expenditure</b>	<b>879</b>	<b>934</b>	<b>983</b>	<b>5,2%</b>
operating expenditure	586	576	596	3,5%
capital expenditure	42	55	54	-3,0%
state intervention	128	133	145	9,6%
special accounts (loans to local authorities)	123	171	188	10,1%
<b>State revenue</b>	<b>138</b>	<b>145</b>	<b>128</b>	<b>-11,5%</b>
revenue from taxation	116	112	110	-1,6%
<b>Allocation from the State to local authorities</b>	<b>93</b>	<b>97</b>	<b>107</b>	<b>10,3%</b>
<b>Local authorities expenditure</b>	<b>594</b>	<b>596</b>	<b>644</b>	<b>8,1%</b>
<b>Local authorities revenue</b>	<b>663</b>	<b>652</b>	<b>699</b>	<b>7,2%</b>
<b>National public institutions budget (1)</b>	<b>261</b>	<b>342</b>	<b>341</b>	<b>-0,3%</b>
<b>Expenses from european funds</b>	<b>53</b>	<b>33</b>	<b>30</b>	<b>-9,5%</b>
<b>French Guyana's contribution to european budget</b>	<b>3</b>	<b>3</b>	<b>4</b>	<b>7,7%</b>

Sources : Public Treasury (1) CSG, CCI, EPAG, ONF, CA

## Sectoriel indicators



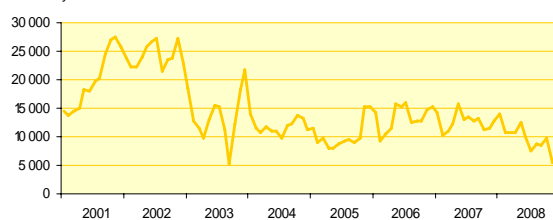
### Space

#### Launching activity progression

	2005	2006	2007	2008
Number of completed launches	5	5	6	6
Number of satellites	9	11	12	10

Source : Ariespace

Year over year term



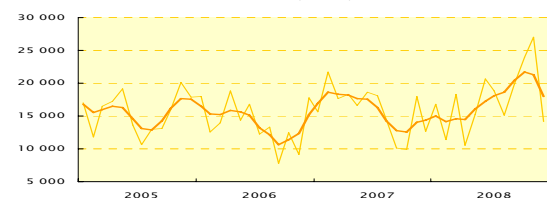
### Gold

#### Gold exports (thousands of €)

	2006	2007	2008	Var. 08/07
Quarter 1	10 397	11 105	10 686	-3,8%
Quarter 2	15 291	13 117	9 895	-24,6%
Quarter 3	12 657	13 333	8 542	-35,9%
Quarter 4	15 285	12 657	6 616	-47,7%

Source : Customs office

#### Barks extracted from drill (in m<sup>3</sup>)



Source : National office of the drills

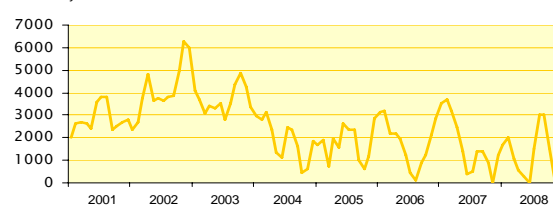
### Wood

#### Wood (in m<sup>3</sup>)

	2006	2007	2008	Var. 08/07
Barks extracted from drill	56 959	55 946	71 302	27%

Source : National office of the drills

Year over year term



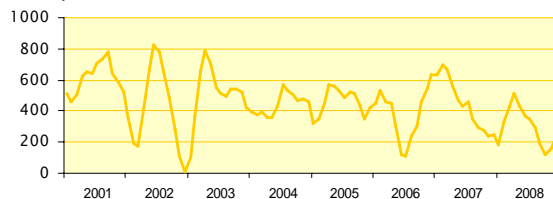
### Rice

#### Rice exports (thousands of €)

	2006	2007	2008	Var. 08/07
Quarter 1	2 207	3 179	1 062	-67%
Quarter 2	3 447	3 543	1 083	-69%
Quarter 3	4 336	4 950	4 108	-17%
Quarter 4	7 212	6 164	4 571	-26%

Source : Customs office

Year over year term



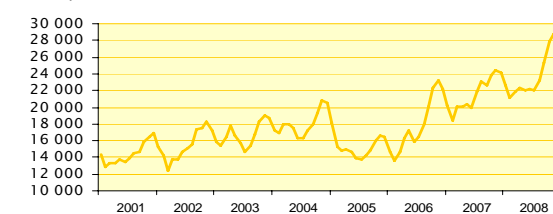
### Shrimps

#### Shrimps exports (thousands of €)

	2006	2007	2008	Var. 08/07
Quarter 1	462	671	429	-36%
Quarter 2	119	428	366	-15%
Quarter 3	306	296	191	-35%
Quarter 4	637	246	217	-12%

Source : Customs office

Year over year term

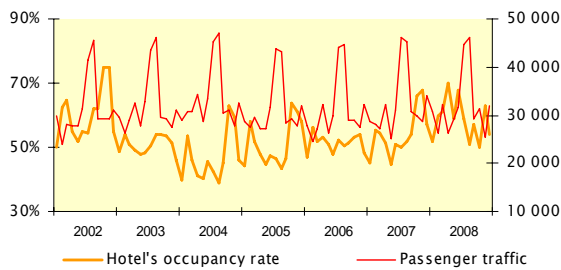


### Buildings and public works

#### Cement sales (tons)

	2006	2007	2008	Var. 08/07
Quarter 1	14 676	20 095	21 896	9,0%
Quarter 2	15 929	19 868	22 156	11,5%
Quarter 3	20 084	22 681	25 296	11,5%
Quarter 4	22 215	24 086	28 113	16,7%

Source : Ciment guyanais



## Tourism

	2006	2007	2008	Var. 08/07 in point(s)
Hotel's occupancy rate	51,7%	54,0%	57,5%	3,5
Passenger traffic at Rochambeau airport	374 394	386 979	385 142	-0,5%

Sources : INSEE, CCIIG

## Goods transportation

	Air freight (tons)				Harbor freight (tons)			
	2006	2007	2008	Var. 08/07	2006	2007	2008	Var. 08/07
Unloaded freight	3 609	na	na	na	540 362	539 928	565 747	4,8%
Loaded freight	1 294	na	na	na	36 409	30 170	29 071	-3,6%
<b>Total</b>	<b>4 903</b>	<b>4 973</b>	<b>4 702</b>	<b>-5,5%</b>	<b>576 771</b>	<b>570 098</b>	<b>594 818</b>	<b>4,3%</b>

Sources : CCIIG, DDE

## Structural factors

### Population and demography

	2006	2007	2008
Population (p)	205 954	213 500	221 500
Birth rate (for 1000 inhabitants)	30,5	30,0	na
Death rate (for 1000 inhabitants)	3,5	3,5	na

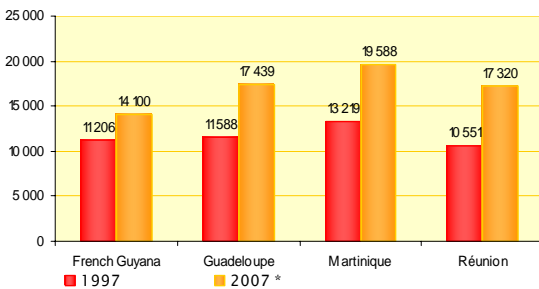
Source : INSEE

(p) provisional data

### Estimate of population growth

	2010	2015	2030
Population	223 000	261 000	424 000
Under 20 years old (%)	43,4	42,7	43,0
20-59 years old (%)	49,6	49,2	46,1
Over 60 years old (%)	7,0	8,1	10,9

Source : INSEE



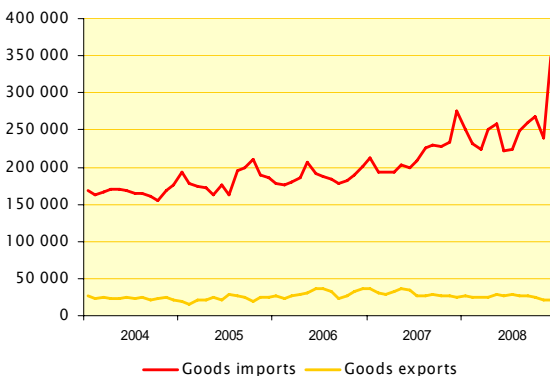
### Gross domestic product per capita

	1997	2003	2006	2007*
French Guyana	11 206	12 375	13 800	14 100
Guadeloupe	11 588	14 616	17 338	17 439
Martinique	13 219	16 370	19 050	19 588
Réunion	10 551	13 434	16 199	17 320

\* Estimation CEROM

Source : INSEE

### Year over year term



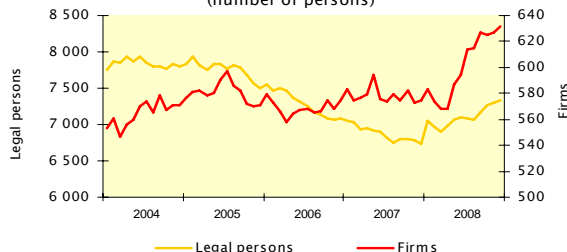
### Foreign Trade (millions of €)

	2006	2007	2008	Var. 08/07	% 2007
<b>Goods exports</b>	<b>122,7</b>	<b>117,1</b>	<b>99,9</b>	<b>-14,7%</b>	
Agriculture, sylviculture, fishing	1,2	0,9	0,8	-11,1%	0,8%
Agricultural and food industry products	12,9	16,9	15,9	-5,9%	15,9%
Consumption goods	1,0	2,4	1,3	-45,8%	1,3%
Motors	19,7	21,2	23,5	10,8%	23,5%
Equipement goods	28,9	20,5	14,6	-28,8%	14,6%
Intermediaries goods	58,8	54,8	43,9	-19,9%	43,9%
<b>Goods imports</b>	<b>749,7</b>	<b>896,6</b>	<b>1 051,4</b>	<b>17,3%</b>	<b>100%</b>
Agriculture, sylviculture, fishing	9,5	9,8	10,2	4,1%	1,0%
Agricultural and food industry products	143,8	158,9	162,0	2,0%	15,4%
Consumption goods	131,6	140,5	150,1	6,8%	14,3%
Motors	100,8	134,2	160,9	19,9%	15,3%
Equipement goods	138,4	187,0	260,8	39,5%	24,8%
Intermediaries goods	131,5	151,7	184,7	21,8%	17,6%
Combustible and fuel	92,8	113,9	122,3	7,4%	11,6%
Various products	1,3	0,6	0,5	-16,7%	0,0%
<b>Cover rate</b>	<b>16,4%</b>	<b>13,1%</b>	<b>9,5%</b>	<b>-3,6 pts</b>	<b>100%</b>

Source : Customs office

## Indicators of households vulnerability

### Ban on writing cheques (number of persons)



### Excessive debt's cases (year over year term)

