

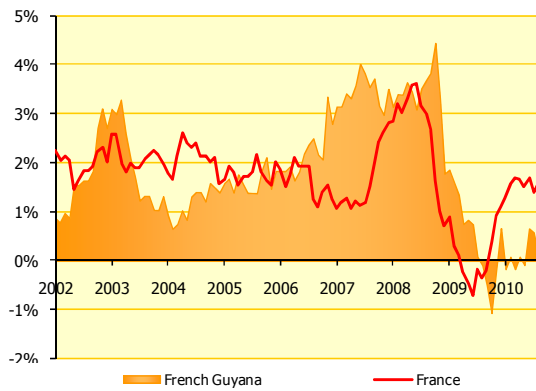


Economic scoreboard of French Guyana



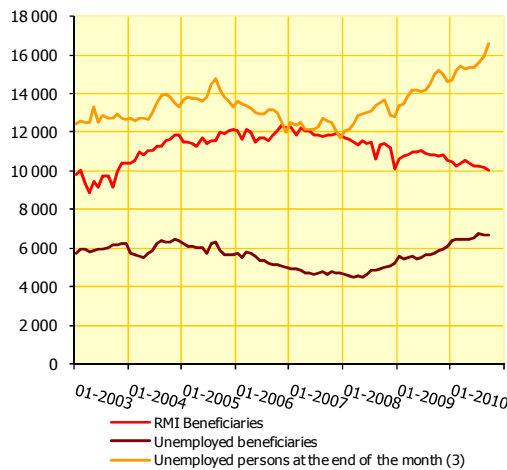
Updated : december 2010

Macro-economic indicators



Price evolution over 12 months	2007	2008	2009	2010	Var. 10/09 in point(s)
French Guyana					
March	3,1%	3,4%	1,6%	0,1%	-1,5
June	3,6%	3,5%	0,8%	-0,1%	-0,9
September	3,5%	3,7%	-0,1%	0,1%	0,2
December	3,0%	3,3%	-0,2%	na	na
France					
March	1,2%	3,2%	0,3%	1,6%	1,3
June	1,2%	3,6%	-0,5%	1,5%	2,0
September	1,5%	3,0%	-0,4%	1,6%	2,0
December	2,6%	1,0%	0,9%	na	na

Source : INSEE

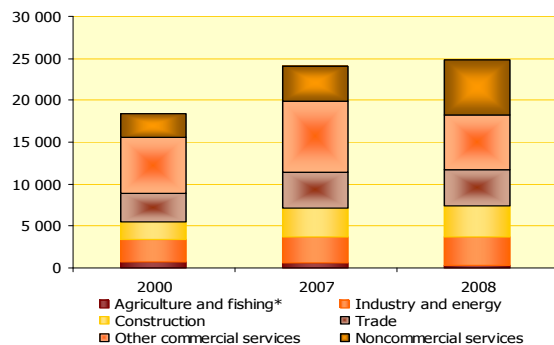


Job, unemployment	2007	2008	2009	2010* (sept.)	Var. 10/09 (sept. to sept.)
RMI (1) mean minimum benefit paid to those with no other source of income					
RMI Beneficiaries	12 178	11 343	11 415	10 016	-7,6%
Cumulated paid amounts (millions of €)	68,8	66,2	65,1	47,6	-0,8%
Average monthly allowance	434	440	446	na	na
Unemployment insurance (2)					
Unemployed beneficiaries	4 706	5 186	6 082	6 647	15,6%
Cumulated paid amounts (millions of €)	45,8	42,4	54,4	na	na
Unemployed persons at the end of the month (3)	11 697	12 834	14 624	16 583	10,7%
Unemployment rate (ILO) (4)**	21,2%	21,8%	21,1%	21,0%	-0,1 pt

Sources : (1) Caisse allocations familiales, (2) Pôle Emploi, (3) DDTEFP (following the reform of February 2009, rough DEFM Category A), (4) Insee

* Data in end of the month unconsolidated

** Updated data



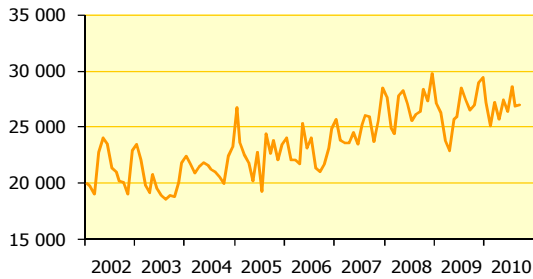
Number of salaried employees	2000	2007	2008	Var. 08/07
Agriculture and fishing*	740	587	339	-42,2%
Industry and energy	2 653	3 151	3 304	4,9%
Construction	2 107	3 332	3 713	11,4%
Trade	3 481	4 358	4 394	0,8%
Other commercial services	6 678	8 482	6 480	ns
Noncommercial services	2 778	4 206	6 551	ns
Total	18 437	24 116	24 781	2,8%

Source : Pôle Emploi

*The field of the investigation of the Pole Emploi not exhaustive, primarily observing the evolution of the employee job in the nonagricultural private sector

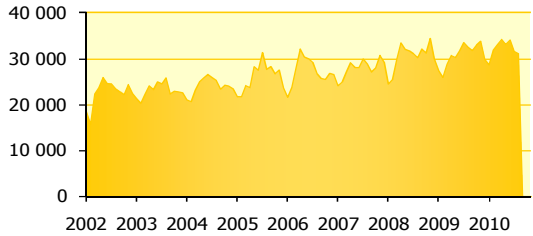
Consumption

Quarterly data



Import duty					
(thousands of €)	2007	2008	2009	2010	Var. 10/09
Quarter 1	23 555	24 381	23 858	27 186	13,9%
Quarter 2	23 517	27 108	25 958	26 445	1,9%
Quarter 3	25 885	26 414	26 491	26 945	1,7%
Quarter 4	28 456	29 804	29 429	na	na
Total	101 413	107 707	105 735	80 576	

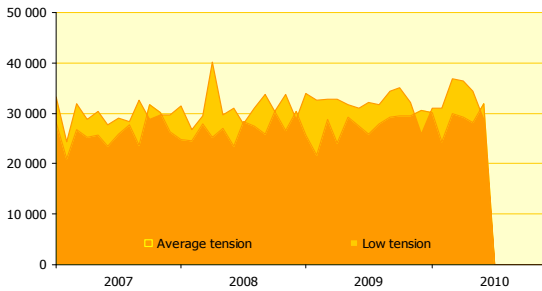
Source: Public Treasury



Import : consumption goods					
(thousands of €)	2007	2008	2009	2010	Var. 10/09
Quarter 1	24 962	25 469	25 970	31 838	22,6%
Quarter 2	28 130	32 108	30 297	33 152	9,3%
Quarter 3	28 870	30 243	32 559	31 157	-4,3%
Quarter 4	30 745	34 456	33 847	na	na
Total	112 708	122 277	122 673	96 147	

Source: Customs office

The aggregate nomenclature - NA 2008 - replaces the economic nomenclature of synthesis (NES)
Consumption goods: Textiles, clothing, leather and shoes, medicinal products, manufactured goods various, products of the edition and the communication



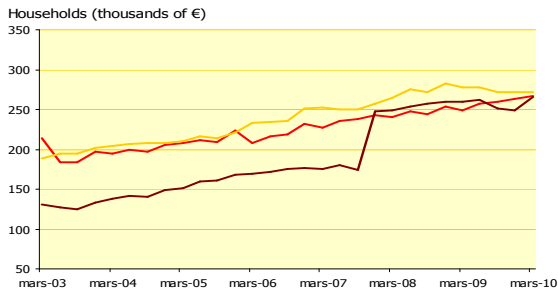
Energy consumption					
Average and low tension cumulated (in millions of kWh)	2007	2008	2009	2010	Var. 10/09
Quarter 1	164 979	164 988	175 566	183 425	4,5%
Quarter 2	161 160	176 461	176 529	188 690	6,9%
Quarter 3	167 096	174 062	181 081	na	na
Quarter 4	176 292	180 302	182 512	na	na
Total	669 527	695 813	715 688	372 115	

Source: estimations EDF-Guyane

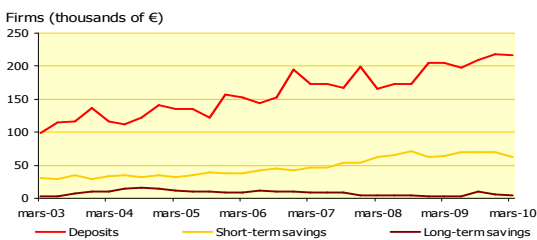
Savings and credits

Credit institution installed locally

The financial data of quarters 2 and 3 are not still available on the date of publication considering the implementation of the reform SURFI.

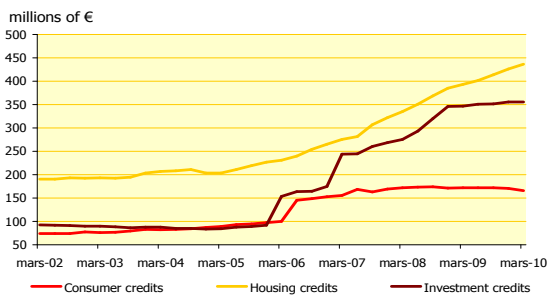


Savings evolution		Deposits	Short-term savings	Long-term savings
Households				
2009/2008	Quarter 1	3,6%	5,0%	2,2%
	Quarter 2	3,7%	0,8%	4,1%
	Quarter 3	6,3%	0,0%	11,7%
	Quarter 4	3,9%	-3,9%	16,2%
2010/2009	Quarter 1	7,2%	-2,1%	10,1%
	Quarter 2	na	na	na



Firms				
2009/2008	Quarter 1	23,8%	2,8%	-29,7%
	Quarter 2	14,7%	6,9%	-40,6%
	Quarter 3	21,3%	-2,6%	159,7%
	Quarter 4	6,4%	12,9%	62,7%
2010/2009	Quarter 1	6,2%	-2,0%	68,6%
	Quarter 2	na	na	na

Source : IEDOM



Credits evolution		Households		Firms
		Consumer credits	Housing credits	Investment credits
2009/2008	Quarter 1	0,2%	17,4%	25,9%
	Quarter 2	-0,6%	14,5%	19,6%
	Quarter 3	-1,0%	12,4%	9,8%
	Quarter 4	-0,3%	10,8%	2,9%
2010/2009	Quarter 1	-3,7%	11,0%	2,6%
	Quarter 2	na	na	na

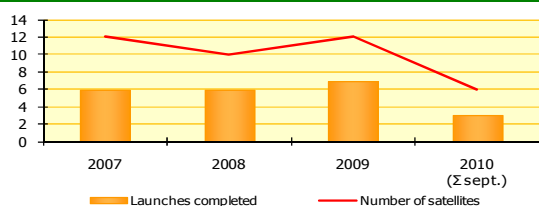
Source : IEDOM

Public Finance

Public finance (millions of €)	2007	2008	2009	Var. 09/08
Public expenditure	983	1048	1075	2,6%
operating expenditure	596	654	630	-3,7%
capital expenditure	54	66	88	33,3%
State intervention	145	138	157	13,8%
special accounts (loans to local authorities)	188	189	200	5,8%
Public revenue	128	159	131	-17,6%
revenue from taxation	110	142	115	-19,0%
Allocation from the State to local authorities	107	111	129	16,2%
Local authorities expenditure	644	766	760	-0,8%
Local authorities revenue	699	837	824	-1,6%
National public institutions budget (1)	341	313	370	18,2%
Expenses from european funds	30	40	42	5,0%
French Guyana's contribution to european budget	3,5	3,6	3,5	-2,8%

Sources : Public Treasury (1) CSG, CCI, EPAG, ONF, CA

Sectoral indicators

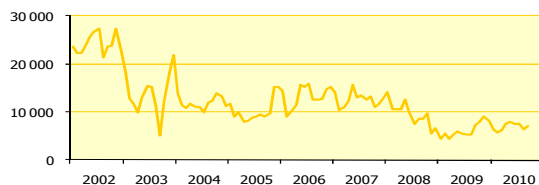


Space

Launching activity progression	2008	2009	2009	2010
		(Σ sept.)		(Σ sept.)
Number of completed launches	6	4	7	3
Number of satellites	10	7	12	6

Source : Arianespace

Quarterly data

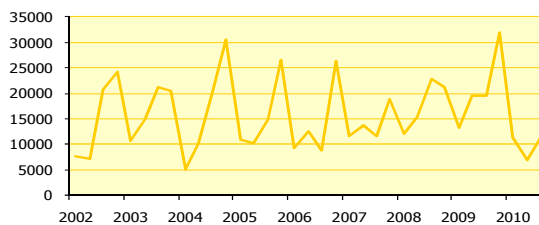


Gold

Gold exports (thousands of €)	2008	2009	2010*	Var. 10/09
Quarter 1	10 686	4 320	6 248	44,6%
Quarter 2	9 895	5 597	7 596	35,7%
Quarter 3	8 542	7 183	6 981	-2,8%
Quarter 4	6 616	8 208	na	na
Total	35 739	25 309	20 826	

Source : Customs office

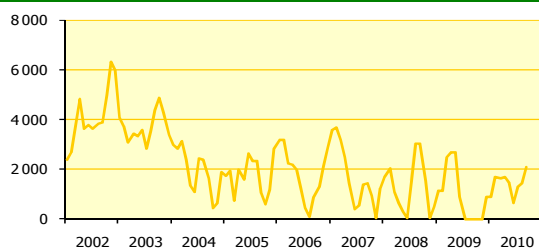
* provisional data



Wood

Barks extracted from the forest (in m³)	2008	2009	2010	Var. 10/09
Quarter 1	12 122	13 236	11 285	-14,7%
Quarter 2	15 258	19 517	6 904	-64,6%
Quarter 3	22 838	19 613	11 113	-43,3%
Quarter 4	21 085	31 905	na	na
Total	71 302	84 271	29 302	

Source : Forests National Office

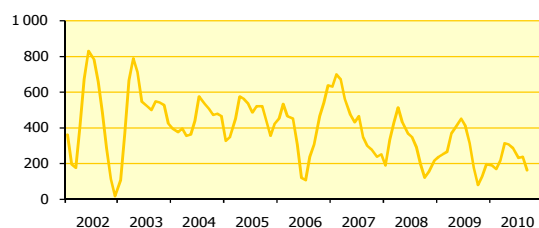


Rice

Rice exports (tons)	2008	2009	2010*	Var. 10/09
Quarter 1	1 083	2 458	1 633	-33,6%
Quarter 2	21	897	615	-31,5%
Quarter 3	3 024	0	2 063	ns
Quarter 4	463	860	na	na
Total	4 591	4 215	4 311	

Source : Customs office

* provisional data

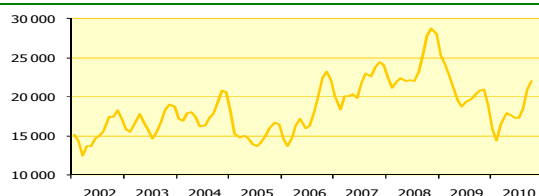


Shrimps

Shrimps exports (tons)	2008	2009	2010*	Var. 10/09
Quarter 1	429	264	213	-19,5%
Quarter 2	366	450	286	-36,4%
Quarter 3	191	171	160	-6,3%
Quarter 4	217	190	na	na
Total	1 203	1 076	659	

Source : Customs office

* provisional data

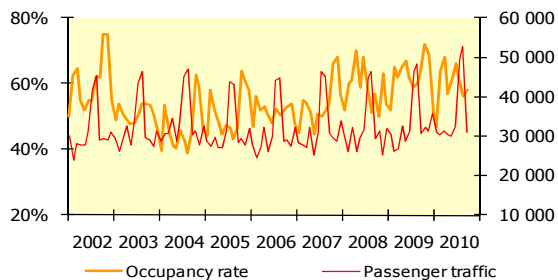


Buildings and public works

Cement sales (tons)	2008	2009	2010	Var. 10/09
Quarter 1	21 896	22 736	16 455	-27,6%
Quarter 2	22 156	18 751	17 317	-7,6%
Quarter 3	25 296	20 291	22 057	8,7%
Quarter 4	28 113	18 923	na	na
Total	97 461	80 701	55 829	

Source : Ciment guyanais

Monthly data



Tourism

	2007	2008	2009	2010 (to sept.)	Var. 10/09 (sept. to sept.)
Hotel's occupancy rate	54,0%	57,5%	62,0%	58,0%	- 6 pt(s)
Passenger traffic** at Rochambeau airport (cumulated at December)	386 979	385 142	400 555	318 940	5,9%

Sources : INSEE , CCIG
** arrived + departures + transits

Structural factors

Population and demography

	2007	2008	2009
Population (p)	213 031	221 500	229 000
Birth rate (for 1000 inhabitants)	29,4	27,7	na
Death rate (for 1000 inhabitants)	3,2	3,4	na

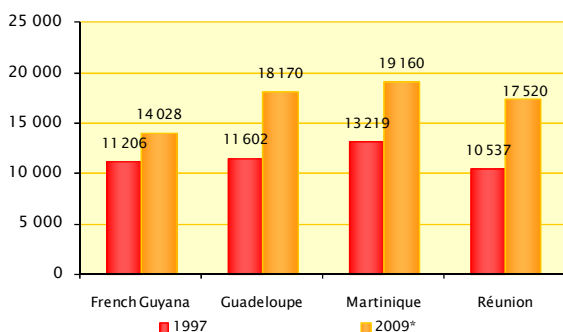
Source : INSEE

(p) provisional data

Estimate of population growth

	2015	2030	2040
Population	261 000	425 520	574 000
Under 20 years old (%)	42,7	43,0	40,5
20-59 years old (%)	49,2	46,1	47,3
Over 60 years old (%)	8,1	10,9	12,3

Source : INSEE



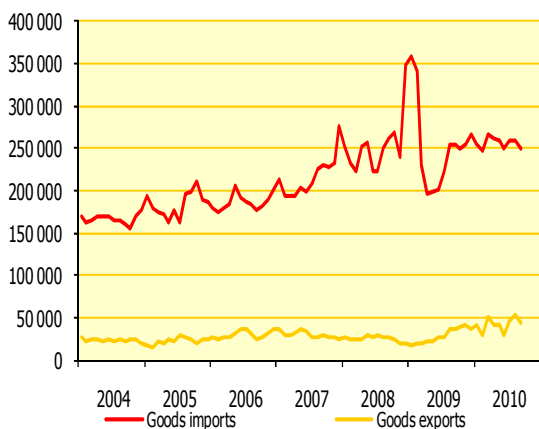
Gross domestic product per capita

	1997	2006	2007	2008*	2009*
French Guyana	11 206	13 298	13 489	13 739	14 028
Guadeloupe	11 602	17 384	18 244	18 680	18 170
Martinique	13 219	19 205	19 800	20 070	19 160
Réunion	10 537	16 434	17 146	18 220	17 520

*CEROM estimate

Source : INSEE

Quarterly data



Foreign Trade (millions of €) (cumulated at December)

	2008	2009	2010* (Σ Sept.)	Var. Σ Sept. 10/09
Goods exports	100,2	120,0	124,2	48,0%
Agriculture, sylviculture, fishing	0,8	0,9	0,5	-41,0%
Agricultural and food industry products	15,9	14,1	10,7	-5,2%
Consumption goods (CG)	1,0	1,4	0,3	-69,1%
Equipment goods (EG)	38,7	68,2	71,9	53,2%
Intermediary goods (of which various products)	43,8	35,4	40,8	70,5%
Goods imports	1 055,0	950,1	765,3	11,9%
Agriculture, sylviculture, fishing	10,2	9,6	8,5	15,8%
Agricultural and food industry products	162,4	156,2	126,5	19,4%
Consumption goods (CG)	122,3	122,7	96,1	8,2%
Equipment goods (EG)	465,4	358,8	282,8	7,6%
Intermediary goods (of which various products and energy)	294,7	312,8	251,3	14,7%
Cover rate	9,5%	12,6%	16,2%	+4 pt(s)

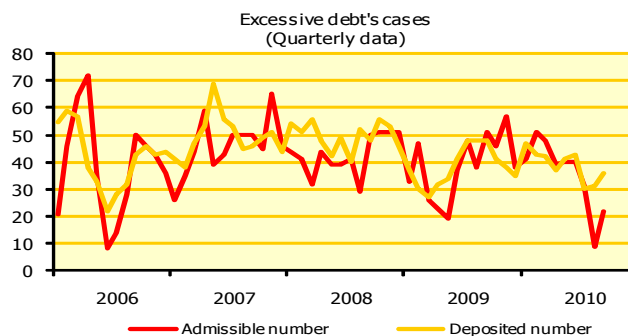
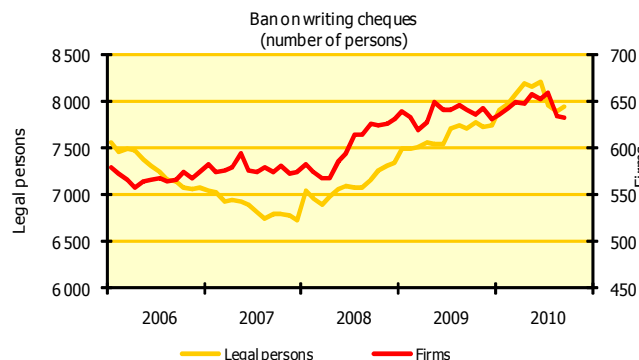
Source : Customs office (*provisional data)

The aggregate nomenclature - NA 2008 - replaces the economic nomenclature of synthesis (ENS)

CG: Textiles, clothing leather and shoes; medicinal products; various manufactured goods; products of the edition and the communication

EG: Data-processing, electronic and optical products; electrical equipment and domestic; agricultural industrial machines and, machines various; means of transport

Indicators of households vulnerability



Source : IEDOM