

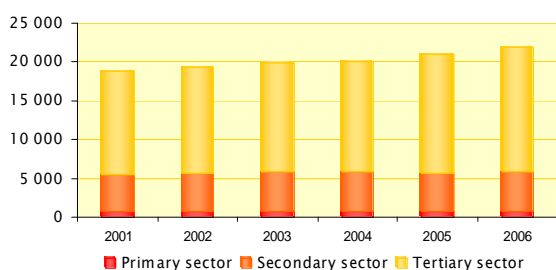


# Economic scoreboard of French Guyana



Updated : April 2008

## Employment, wages, prices



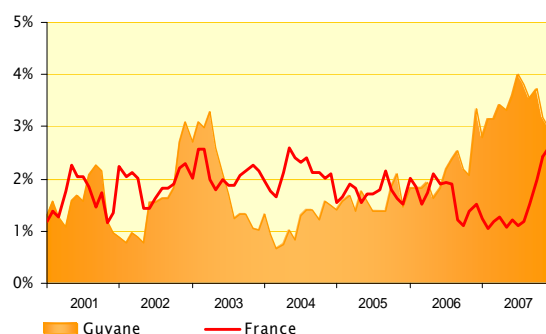
Number of salaried employees	2004	2005	2006	Var. 06/05
Primary sector	671	645	643	-0,3%
Secondary sector	5 056	5 268	5 787	9,9%
<i>constructions</i>	2 446	2 440	2 876	17,9%
<i>intermediaries goods industries</i>	1 245	1 354	1 400	3,4%
Tertiary sector	14 253	15 326	15 910	3,8%
<i>services firms</i>	3 499	3 823	4 012	4,9%
<i>education, health, welfare</i>	2 046	2 411	2 710	12,4%
<b>Total</b>	<b>19 980</b>	<b>21 239</b>	<b>22 340</b>	<b>5,2%</b>

Source: Assédic



Job, unemployment (at the end of december)	2005	2006	2007	Var. 07/06
<b>RMI (1)</b>				
RMI Beneficiaries	12 847	12 912	12 178	-5,7%
Amounts paid (millions of €)	63,4	69,0	68,8	-0,3%
Average monthly allowance	418	427	434	1,6%
<b>Unemployment insurance (2)</b>				
Unemployed beneficiaries	5 626	4 979	4 706	-5,5%
Amounts paid (millions of €)	50,7	47,8	45,8	-4,2%
<b>Unemployed persons at the end of the month</b>	<b>12 610</b>	<b>11 438</b>	<b>10 806</b>	<b>-5,5%</b>
men	5 819	5 043	4 561	-9,6%
women	6 791	6 395	6 245	-2,3%
under 25	1 966	1 728	1 596	-7,6%
registrations over a year	4 375	4 242	4 112	-3,1%
<b>Unemployment rate (ILO) (4)</b>	<b>23,7%</b>	<b>27,6%</b>	<b>20,6%</b>	<b>-7 pts</b>

Sources : Caisse d'allocations familiales (1), Assédic (2), DDTEFP (3), INSEE : according to the new european definition (4)

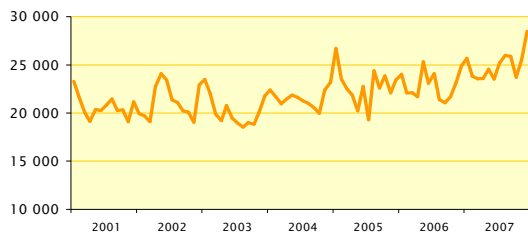


Price evolution over 12 months	2005	2006	2007	Var. 07/06
<b>Guyane</b>				
March	1,7%	1,8%	3,1%	+1,3 pt
June	1,6%	1,8%	3,6%	+1,8 pt
September	1,4%	2,5%	3,5%	+1 pt
December	1,5%	3,3%	3,0%	-0,3 pt
<b>France</b>				
March	1,9%	1,5%	1,2%	-0,3 pt
June	1,7%	1,9%	1,2%	-0,7 pt
September	2,2%	1,2%	1,5%	+0,3 pt
December	1,5%	1,5%	2,6%	+1,1 pt

Source : INSEE

## Consumption

Year over year term

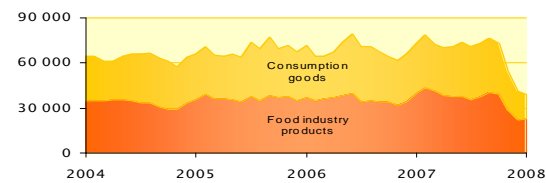


Import duty (thousands of €)

	2005	2006	2007	Var. 07/06
Quarter 1	22 526	22 078	23 555	6,7%
Quarter 2	22 749	23 096	23 517	1,8%
Quarter 3	22 613	21 081	25 885	22,8%
Quarter 4	23 424	24 896	28 456	14,3%

Source: Public Treasury

Year over year term

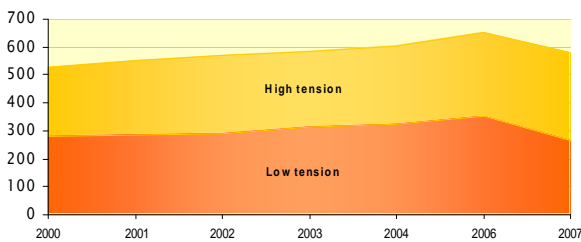


Importations: consumption goods, food industry products

(thousands of €)	2005	2006	2007	Var. 07/06
Quarter 1	64 401	67 454	70 503	4,5%
Quarter 2	73 742	70 832	71 005	0,2%
Quarter 3	69 674	64 463	72 639	12,7%
Quarter 4	71 315	72 752	39 055	-46,3%

Source: Customs office

Electric consumption (millions of kWh)



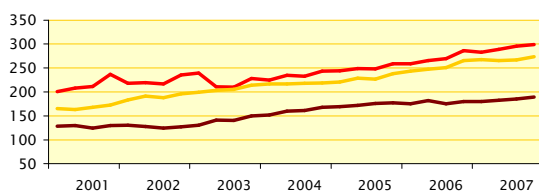
Energy consumption (in millions of kWh and tons)

	2005	2006	2007	Var. 07/06
<b>Electric consumption</b>	<b>647</b>	<b>653</b>	<b>582</b>	<b>-10,9%</b>
Low tension : private persons and craft industry	nd	351	266	-24,2%
High tension : industries, administrations, service sector firms	nd	302	351	16,2%
<b>Hydrocarbure consumption</b>	<b>214 934</b>	<b>180 114</b>	<b>195 695</b>	<b>8,7%</b>
whose fuel oil / EDF gaz	77 265	45 938	62 236	35,5%
whose petrol / diesel	82 684	83 058	85 141	2,5%
<b>Hydraulic part in electric production</b>	<b>59,64%</b>	<b>74,00%</b>	<b>67,00%</b>	<b>-7 pts</b>

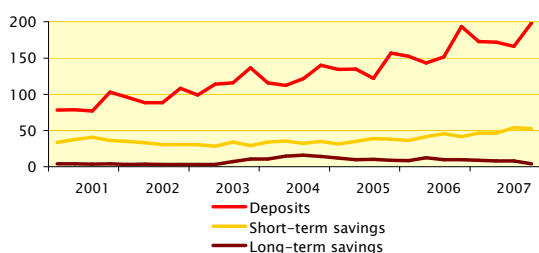
Source: EDF-Guyane, DRIRE

## Saving and credits

Households (thousands of €)



Non-financial companies (thousands of €)

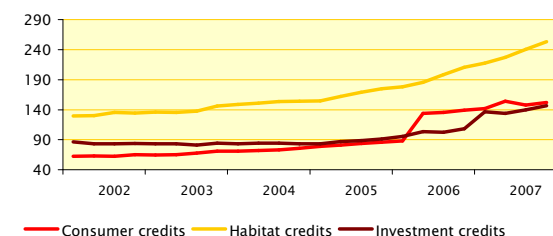


Saving evolution

	Deposits	Short-term savings	Long-term savings
<b>Households</b>			
2006/2005			
Quarter 3	8,5%	10,4%	-0,5%
Quarter 4	10,5%	11,4%	1,6%
2007/2006			
Quarter 1	9,4%	9,9%	2,3%
Quarter 2	8,9%	7,2%	0,6%
Quarter 3	9,7%	6,6%	6,1%
Quarter 4	4,4%	3,0%	5,0%
<b>Non-financial companies</b>			
2006/2005			
Quarter 3	26,1%	16,3%	-1,8%
Quarter 4	23,4%	11,0%	7,6%
2007/2006			
Quarter 1	13,1%	27,1%	3,3%
Quarter 2	20,6%	17,3%	-34,1%
Quarter 3	9,7%	19,2%	-19,2%
Quarter 4	2,4%	25,8%	-54,6%

Source : IEDOM

millions of €

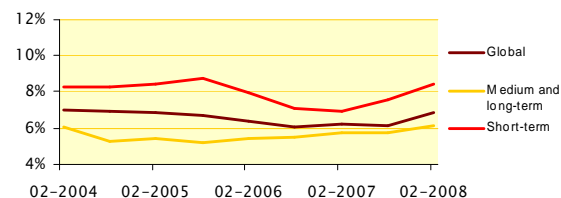


Credits evolution

	Households	Firms	
	Consumer credits	Habitat credits	Investment credits
2006/2005			
Quarter 3	10,2%	17,5%	4,3%
Quarter 4	10,2%	19,1%	7,2%
2007/2006			
Quarter 1	11,3%	20,8%	32,0% *
Quarter 2	15,1%	17,5%	29,0% *
Quarter 3	8,6%	21,2%	36,9% *
Quarter 4	9,3%	20,2%	13,7%

\* By reason of the integrating of a financial house items

Source : IEDOM



Trade credit cost

	ST	MT and LT	Global
2007 - August	7,58%	5,72%	6,17%
2008 - February	8,45%	6,27%	6,89%

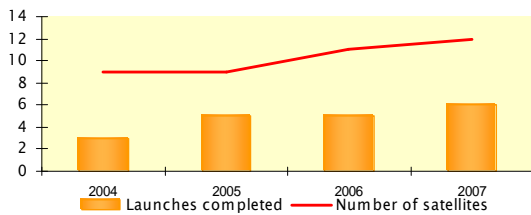
Source: IEDOM

## Public Finance

Public finance ( millions of €)	2004	2005	2006	Var. 06/05
<b>State expenditure</b>	<b>763</b>	<b>879</b>	<b>934</b>	<b>6,2%</b>
<i>functioning</i>	480	586	576	-1,8%
<i>capital expenditure</i>	35	42	55	33,3%
<i>interventions</i>	124	128	133	3,3%
<i>special accounts (loans to local authorities)</i>	120	123	171	38,2%
<b>State revenue</b>	<b>126</b>	<b>138</b>	<b>145</b>	<b>5,0%</b>
<i>revenue from taxation</i>	104	116	112	-3,5%
<b>Attributions from State to local authorities</b>	<b>84</b>	<b>93</b>	<b>97</b>	<b>4,6%</b>
<b>Local authorities expenditure</b>	<b>618</b>	<b>594</b>	<b>596</b>	<b>0,4%</b>
<b>Local authorities revenue</b>	<b>584</b>	<b>663</b>	<b>652</b>	<b>-1,6%</b>
<b>National public institutions budget (1)</b>	<b>264</b>	<b>261</b>	<b>342</b>	<b>31,0%</b>
<b>Expenses from european funds</b>	<b>65</b>	<b>53</b>	<b>33</b>	<b>-36,9%</b>
<b>French Guyana's contribution to european budget</b>	<b>3</b>	<b>3</b>	<b>3</b>	<b>-5,5%</b>

Sources : Public Treasury (1) CSG, CCIG, EPAG, ONF, CA

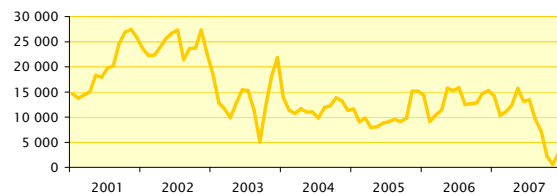
## Sectoriel indicators



Space				
Launching activity progression				
	2004	2005	2006	2007
Launches completed	3	5	5	6
Number of satellites	9	9	11	12

Source : Arianespace

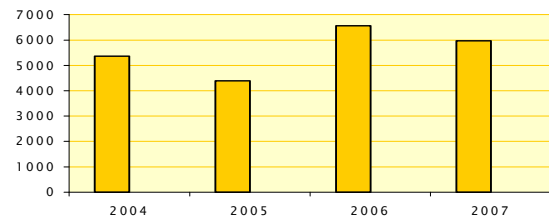
Year over year term



Gold				
Gold exports (thousands of €)				
	2005	2006	2007	Var. 07/06
Quarter 1	9 817	10 397	11 105	6,8%
Quarter 2	8 789	15 291	13 117	-14,2%
Quarter 3	9 107	12 657	7 207	-43,1%
Quarter 4	15 187	15 285	2 841	-81,4%

Source : Customs office

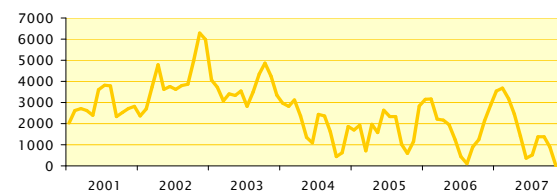
Annual data



Wood				
WOOD (Port traffic)				
	2005	2006	2007	Var. 07/06
Goods traffic (tons)	4 385	6 560	5 970	-9,0%

Source : CCIG

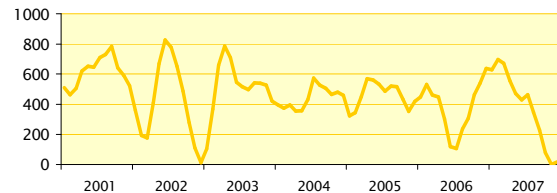
Year over year term



Rice				
Rice exports (thousands of €)				
	2005	2006	2007	Var. 07/06
Quarter 1	724	2 207	3 179	44%
Quarter 2	2 634	1 240	364	-71%
Quarter 3	1 011	888	1 386	56%
Quarter 4	2 831	2 876	0	-100%

Source : Customs office

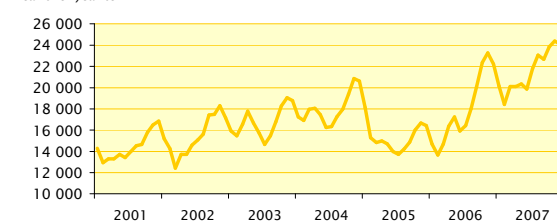
Year over year term



Shrimps				
Shrimps exports (thousands of €)				
	2005	2006	2007	Var. 07/06
Quarter 1	450	462	671	45%
Quarter 2	533	119	428	261%
Quarter 3	515	306	227	-26%
Quarter 4	419	637	19	-97%

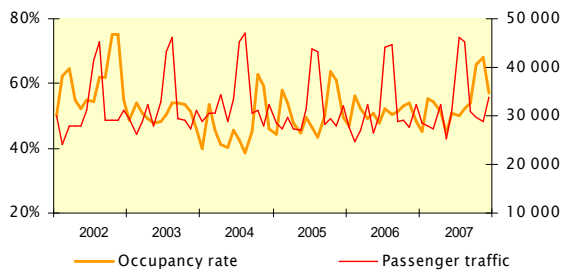
Source : Customs office

Year over year term



Buildings and public works				
Cement sales (tons)				
	2005	2006	2007	Var. 07/06
Quarter 1	14 818	14 676	20 095	36,9%
Quarter 2	13 962	15 929	19 868	24,7%
Quarter 3	14 871	20 084	22 681	12,9%
Quarter 4	16 441	22 215	24 086	8,4%

Source : Ciment guyanais



## Tourism

	2005	2006	2007	Var. 07/06
Hotel's occupancy rate	50,9%	51,7%	53,7%	+ 2 pts
Passenger traffic at Rochambeau airport	375 844	374 394	386 979	3,4%

Sources : INSEE, CCIG

## Goods transportation

	Air freight (tons)				Sea freight (tons)			
	2005	2006	2007	Var. 07/06	2005	2006	2007	Var. 07/06
Unloaded freight	3 792	3 609	nd	nd	529 195	529 451	582 143	10,0%
Loaded freight	1 229	1 294	nd	nd	25 112	35 775	36 252	1,3%
<b>Total</b>	<b>5 021</b>	<b>4 903</b>	<b>4 973</b>	<b>1,4%</b>	<b>554 307</b>	<b>565 226</b>	<b>618 395</b>	<b>9,4%</b>

Sources : CCIG, DDE

## Structural factors

### Population and demography

	2005	2006	2007
Population (p)	198 000	202 000	209 000
Birth rate (for 1000 inhabitants)	30,3	30,5	nd
Death rate (for 1000 inhabitants)	3,6	3,5	nd

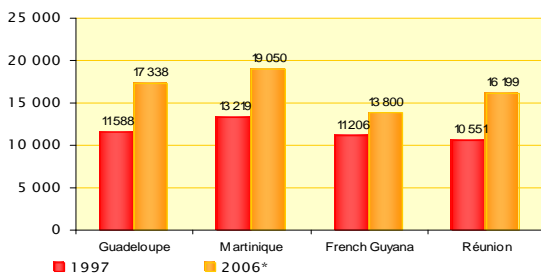
Source : INSEE

(p) provisional data

### Estimate of population growth

	2000	2010	2020	2030
Population	161 561	222 093	307 238	425 520
Under 15 years old (%)	35,6	34,0	33,7	34,0
15-60 years old (%)	58,7	58,8	57,0	55,1
Over 60 years old (%)	5,7	7,2	9,3	10,9

Source : INSEE



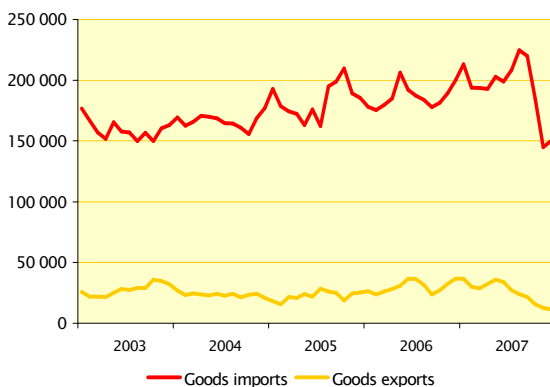
### Gross domestic product per capita

	1997	2002	2003	2006*
Guadeloupe	11 588	14 108	14 616	17 338
Martinique	13 219	15 622	16 370	19 050
French Guyana	11 206	13 079	12 375	13 800
Réunion	10 551	13 300	13 434	16 199

\* Estimation CEROM

Source : INSEE

### Year over year term



### Foreign Trade (millions of €)

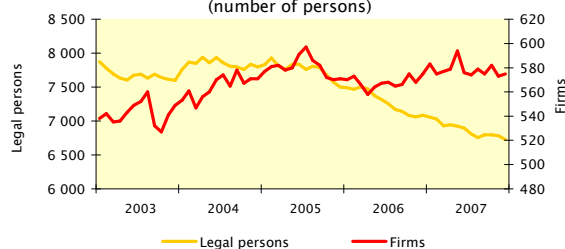
	2005	2006	2007 *	Var. 07/06	% 2007
<b>Goods exports</b>	<b>93,7</b>	<b>122,7</b>	<b>94,2</b>	<b>-23,2%</b>	
Agriculture, sylviculture, fishing	0,6	1,2	0,6	-50,0%	0,6%
Agricultural and food industry products	13,2	12,9	13,4	3,9%	14,2%
Consumption goods	1,2	1,0	2,4	139,2%	2,5%
Motors	11,2	19,7	20,8	5,5%	22,1%
Equipement goods	20,6	28,9	20,0	-30,9%	21,2%
Intermediaries goods	46,8	58,8	36,7	-37,6%	39,0%
<b>Goods imports</b>	<b>734,8</b>	<b>749,7</b>	<b>757,9</b>	<b>1,1%</b>	
Agriculture, sylviculture, fishing	8,8	9,5	8,7	-8,5%	1,1%
Agricultural and food industry products	147,3	143,8	135,4	-5,8%	17,9%
Consumption goods	131,9	131,6	116,7	-11,4%	15,4%
Motors	103,0	100,8	97,8	-2,9%	12,9%
Equipement goods	125,5	138,4	162,6	17,5%	21,5%
Intermediaries goods	121,9	131,5	123,6	-6,0%	16,3%
Combustible and fuel	94,9	92,8	112,4	21,1%	14,8%
Various products	1,4	1,3	0,6	-54,5%	0,1%
<b>Taux de couverture</b>	<b>12,7%</b>	<b>16,4%</b>	<b>12,4%</b>	<b>- 4 pts</b>	

(p) provisional data

Source : Customs office

## Indicators of households vulnerability

### Ban on writing cheques (number of persons)



Source : IEDOM

### Excessive debt's cases (year over year term)

