



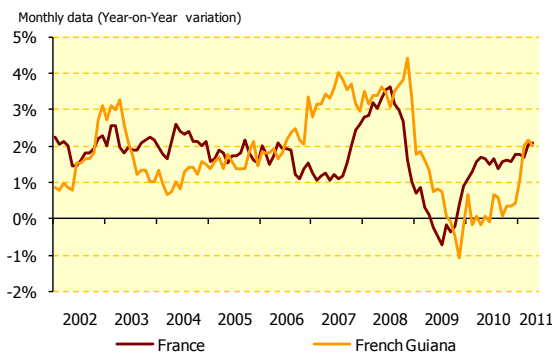
French Guiana Economic Review



Updated : september 2011

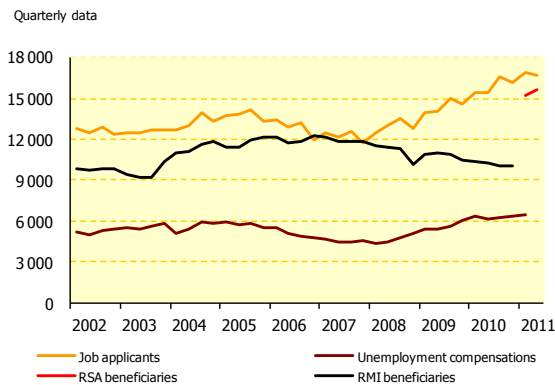
Macroeconomic indicators

Data non-seasonally adjusted



Price evolution over 12 months	2008	2009	2010	2011	Var. 11/10 in point(s)
French Guiana					
March	3,4%	1,6%	0,1%	2,2%	2,1
June	3,5%	0,8%	-0,1%	2,0%	2,1
September	3,7%	-0,1%	0,1%	na.	ns.
December	3,3%	-0,2%	0,4%	na.	ns.
France					
March	3,2%	0,3%	1,6%	2,0%	0,4
June	3,6%	-0,5%	1,5%	2,1%	0,6
September	3,0%	-0,4%	1,6%	na.	ns.
December	1,0%	0,9%	1,8%	na.	ns.

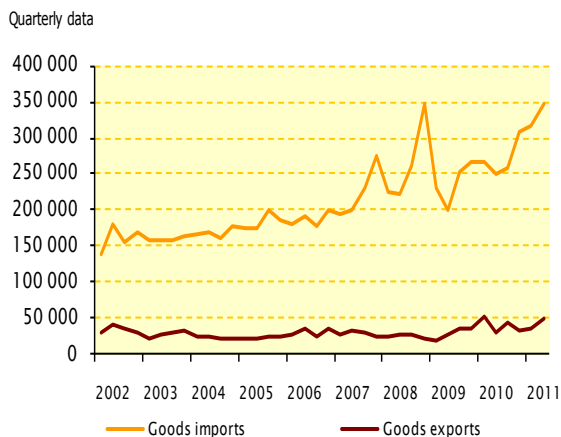
Source : Insee



Labour market and unemployment (up to June)	2008	2009	2010	2011	Var. 11/10 (June to June)
RSA/RMI (1) * minimum income allowance granted to those with no other source of income					
RSA beneficiaries	na.	na.	na.	15 671	ns.
Cumulated paid amounts (€ millions)	na.	na.	na.	37,6	ns.
RMI beneficiaries	11 389	11 032	10 240	na.	ns.
Cumulated paid amounts (€ millions)	32,4	31,9	32,0	5,1**	ns.
Average monthly allowance (in December)	440	446	453	na.	ns.
Worker's compensation insurance (2)					
Unemployed beneficiaries	4 595	5 491	6 509	6 826	4,9%
Unfulfilled job applications at the end of the month	12 991	14 090	15 386	16 736	8,8%
Unemployment rate (ILO) (4)	21,8%	21,1%	21,0%	na.	ns.

* The RSA (Revenu de Solidarité Active) was launched in January 2011, replacing the RMI. Data in the end of the month unconsolidated. ** Data resulting from regularizations.

Sources : (1) Caisse d'allocations familiales, (2) Pôle Emploi including files on standby, (3) DIECCTE DEFM Cat A (4) Enquête emploi Insee of June



Foreign trade - up to June	2008	2009	2010*	2011*	Var. 11/10
€ Millions					
Goods exports	52,5	46,8	80,6	86,3	7,0%
Agriculture, sylviculture, fishing	0,4	0,7	0,3	0,4	13,1%
Food industry products	7,5	8,0	6,1	6,2	2,7%
Consumption goods (CG)	0,6	0,6	0,2	7,0	ns.
Equipment goods (EG)	19,7	24,2	55,7	45,3	-18,7%
Various products	24,4	13,4	18,3	27,3	49,4%
Goods imports	445,5	431,1	516,3	662,5	28,3%
Agriculture, sylviculture, fishing	4,5	4,9	5,1	6,3	22,9%
Food industry products	78,7	68,2	84,9	98,3	15,7%
Consumption goods (CG)	57,6	56,3	65,6	78,5	19,6%
Equipment goods (EG)	177,4	170,5	189,6	242,3	27,8%
Various products	82,8	76,4	85,8	130,2	51,7%
Oil products	44,6	54,8	85,2	107,0	25,6%
Covering ratio	11,8%	10,9%	15,6%	13,0%	-2,6 pts

* Provisional data

Source : Office of customs and border protection

The aggregate nomenclature - NA 2008- replaces the economic nomenclature of synthesis (ENS)

CG: Textiles, clothing leather and shoes; medicinal products; various manufactured goods; products of edition and communication industries

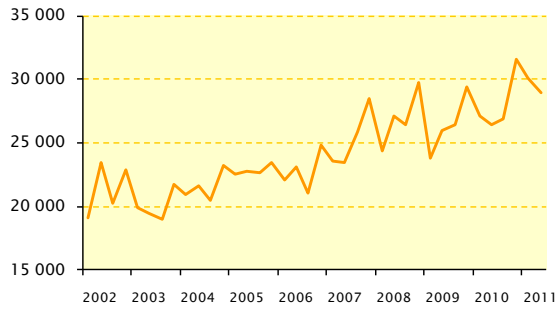
EG: data-processing, electronic and optical products; electrical and domestic equipment; agricultural, industrial and various machines; transport equipment

∇: Late 2008 increase in imports due to highly sustained growths in the areas of: "logistic equipments", "industrial, agricultural and other machines", and "plastic, rubber and other mineral goods".

∴: Slight drop in imports in early 2009 due to strong decreases in the fields of: "industrial, agricultural and other machines" and "natural hydrocarbons and other mining goods".

Consumption

Quarterly data

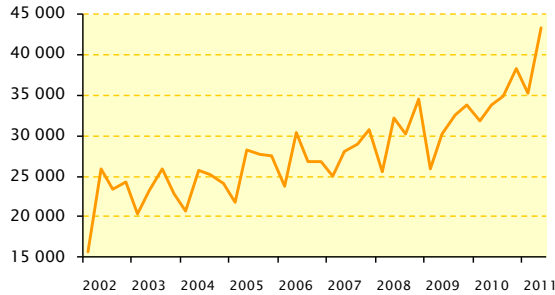


Custom tariffs and tax

€ Thousands	2008	2009	2010	2011	Var. 11/10
Quarter 1	24 381	23 858	27 186	30 139	10,9%
Quarter 2	27 108	25 958	26 445	28 963	9,5%
Quarter 3	26 414	26 491	26 954	na.	ns.
Quarter 4	29 804	29 429	31 577	na.	ns.
Total	107 706	105 735	112 162	59 102	ns.

Source : Office of customs and border protection

Quarterly data



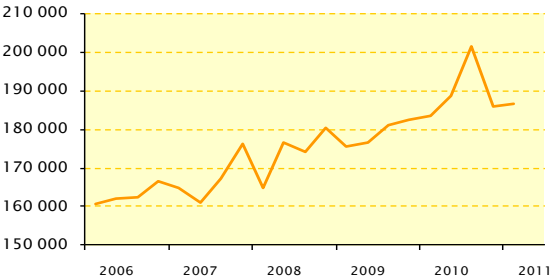
Imports of consumption goods

€ Thousands	2008	2009	2010 *	2011 *	Var. 11/10
Quarter 1	25 469	25 970	31 838	35 171	10,5%
Quarter 2	32 108	30 297	33 801	43 317	28,2%
Quarter 3	30 243	32 559	34 851	nd.	ns.
Quarter 4	34 456	33 841	38 203	nd.	ns.
Total	122 277	122 667	138 660	78 489	ns.

* Provisional data

Source : Office of customs and border protection

Quarterly data



Electric energy consumption Middle and low tension cumulated

KWh Millions	2008	2009	2010	2011	Var. 11/10
Quarter 1	164 988	175 566	183 425	186 473	1,7%
Quarter 2	176 461	176 529	188 690	na.	ns.
Quarter 3	174 062	181 081	201 475	na.	ns.
Quarter 4	180 302	182 512	185 863	na.	ns.
Total	695 813	715 688	759 453	186 473	ns.

* Provisional data

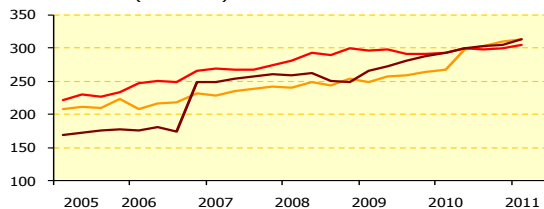
Source : EDF

Savings and credits

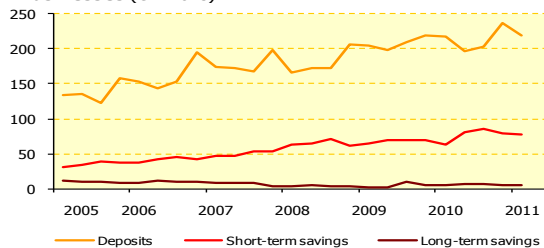
Local or out of the market credit institutions

Following the June 2010 SURFI reform, the local credit institutions' scope has been adapted. The historical data are only available starting from March 2005.

Households (€ Millions)



Businesses (€ Millions)

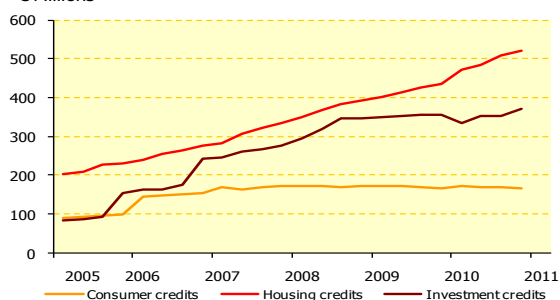


Savings evolution

	Deposits	Short-term savings	Long-term savings	
Households				
Quarter 1	7,2%	-1,2%	10,1%	
2010/ 2009	Quarter 2	15,6%	0,7%	10,0%
Quarter 3	17,0%	2,1%	8,1%	
Quarter 4	17,8%	2,5%	5,6%	
2011/ 2010	Quarter 1	17,4%	4,2%	7,0%
Businesses				
Quarter 1	6,2%	-2,0%	68,6%	
2010/2009	Quarter 2	-0,8%	16,1%	124,2%
Quarter 3	-3,3%	24,4%	-24,9%	
Quarter 4	7,9%	13,7%	2,8%	
2011/ 2010	Quarter 1	1,0%	22,7%	19,9%

Source : IEDOM

€ Millions



Credits evolution

	Households	Businesses		
	Consumer credits	Housing credits	Investment credits	
Quarter 1	-3,7%	11,0%	2,6%	
2010/ 2009	Quarter 2	0,9%	17,7%	-5,1%
Quarter 3	-1,2%	16,9%	0,7%	
Quarter 4	-0,4%	19,7%	-0,9%	
2011/ 2010	Quarter 1	0,5%	19,3%	3,9%

Source : IEDOM

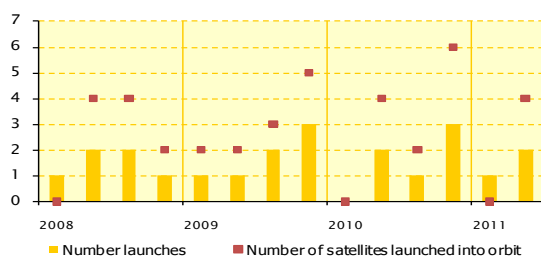
Government Spendings & Revenues

Government Spendings & Revenues				
€ Millions	2007	2008	2009	Var. 09/08
Public expenditure	983	1048	1075	2,6%
operating expenditure	596	654	630	-3,7%
capital expenditure	54	66	88	32,8%
State interventions	145	138	157	13,8%
special accounts (loans to local authorities)	188	189	200	5,8%
Public revenue	128	159	131	-17,7%
revenue from taxation	110	142	115	-19,1%
Allocation from the State to local authorities	107	111	129	15,9%
Local authorities' expenditure	644	766	760	-0,8%
Local authorities' revenue	699	837	824	-1,5%
National public bodies' budget (1)	341	313	370	18,3%
Expenses from European funds	30	40	42	4,8%
French Guiana's contribution to European budget	3,5	3,6	3,5	-1,4%

Sources : Treasury (1)CSG, CCIG, EPAG, ONF, CA

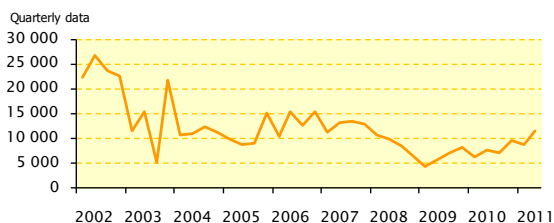
Sector indicators

Space Industry



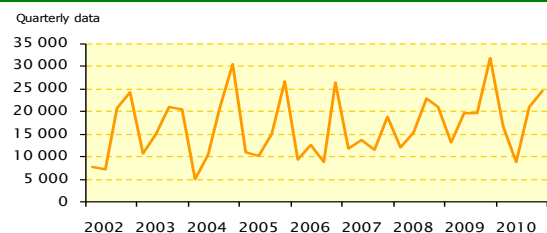
Launching activity				
	2008	2009	2010	2011
Number launches				
Quarter 1	1	1	0	1
Quarter 2	2	1	2	2
Quarter 3	2	2	1	
Quarter 4	1	3	3	
Total	6	7	6	
Number of satellites launched into orbit				
Quarter 1	0*	2	0	0*
Quarter 2	4	2	4	4
Quarter 3	4	3	2	
Quarter 4	2	5	6	
Total	10	12	12	

* 1 ATV (Automated transfer vehicle) put into orbit
Source : Arianespace



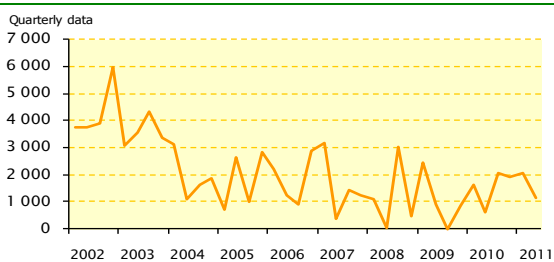
Gold exports					
€ Thousands	2008	2009	2010*	2011*	Var. 11/10
Quarter 1	10 686	4 320	6 248	8 813	41,0%
Quarter 2	9 895	5 597	7 596	11 546	52,0%
Quarter 3	8 542	7 183	6 981	na.	ns.
Quarter 4	6 616	8 208	9 538	na.	ns.
Total	35 739	25 309	30 364	20 358	ns.

* Provisional data
Source : Office of customs and border protection



Logs extracted from the forest					
M3	2008	2009	2010	2011*	Var. 10/09
Quarter 1	12 122	13 236	16 555	8 747	25,1%
Quarter 2	15 258	19 517	8 791	na.	-55,0%
Quarter 3	22 838	19 613	20 834	na.	6,2%
Quarter 4	21 085	31 905	24 439	na.	-23,4%
Total	71 302	84 271	70 619	na.	-16,2%

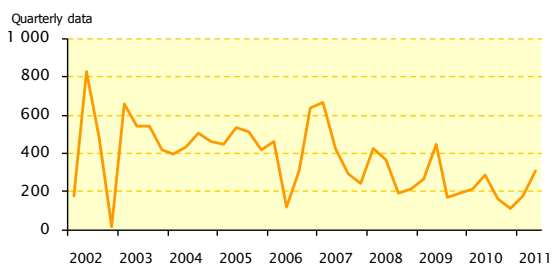
*unconsolidated data
Source : National Forest Office



Rice exports					
Tons	2008	2009	2010*	2011*	Var. 11/10
Quarter 1	1 083	2 458	1 633	2 054	25,8%
Quarter 2	21	897	615	1 155	88,0%
Quarter 3	3 025	0	2 063	na.	ns.
Quarter 4	463	860	1 915	na.	ns.
Total	4 592	4 215	6 225	3 209	ns.

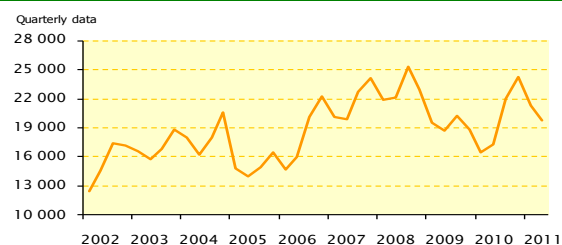
*Provisional data
Source : Office of customs and border protection

NB: The absence of export during Q3 09 is due to the change of management of "Grupo S.O.S" in Madrid; requiring a few months of adaptation to take over the marketing activity. There was only one residual activity of the local sales of various products.



Shrimps exports					
Tons	2008	2009	2010*	2011*	Var. 11/10
Quarter 1	429	264	213	177	-17,0%
Quarter 2	366	450	286	308	7,6%
Quarter 3	191	171	160	na.	ns.
Quarter 4	217	190	111	na.	ns.
Total	1 203	1 076	770	484	ns.

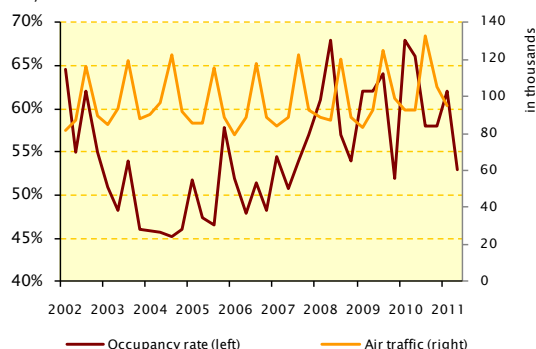
* Provisional data
Source : Office of customs and border protection



Cement sales					
Tons	2008	2009	2010	2011	Var. 11/10
Quarter 1	21 894	19 561	16 455	21 340	29,7%
Quarter 2	22 153	18 736	17 299	19 732	14,1%
Quarter 3	25 293	20 230	21 980	na.	ns.
Quarter 4	22 898	18 790	24 275	na.	ns.
Total	92 238	77 317	80 009	41 072	ns.

Source : Ciment guyanais

Quarterly data



Tourism

	2008	2009	2010	2011	Var. 11/10
Hotels' occupancy rate					
Quarter 1	61%	62%	68%	62%	- 6 pts
Quarter 2	68%	62%	66%	53%	- 13 pts
Quarter 3	57%	64%	58%	na.	ns.
Quarter 4	54%	52%	58%	na.	ns.
Passenger traffic at Cayenne airport *					
Quarter 1	89 045	83 267	92 817	94 912	2,3%
Quarter 2	87 139	92 845	93 016	na.	ns.
Quarter 3	120 400	125 147	133 107	na.	ns.
Quarter 4	88 591	99 296	104 909	na.	ns.
Total	385 175	400 555	423 849	na.	ns.

* arrivals + departures + transits
Sources : INSEE , CCIRG

Structural factors

Population and demography

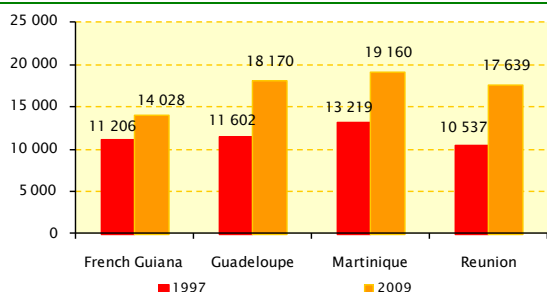
	2007	2008	2009	2010
Population	213 031	219 266	225 751*	232 223*
Birth rate (for 1000 inhabitants)	29,5	28,1	26,9*	nd.
Death rate (for 1000 inhabitants)	3,2	3,4	3,1*	nd.

* Provisional data
Source : INSEE

Estimates of population growth

	2009*	2015	2030	2040
Population	225 751	282 000	442 000	574 000
Under 20 years (%)	44,4	43,0	41,5	40,5
From 20 to 59 years (%)	49,4	49,6	47,9	47,3
Over 60 years (%)	6,2	7,4	10,6	12,3

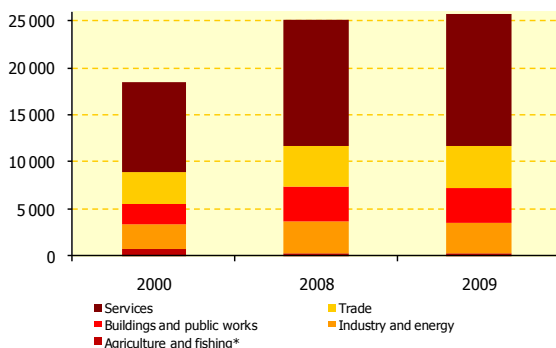
Source : INSEE * Projection until January 1st, 2009, provisional results stopped at the end of 2010.



Gross domestic product per capita (current value)

	1997	2007	2008 *	2009 *
French Guiana	11 206	13 489	13 739	14 028
Guadeloupe	11 602	18 244	18 680	18 170
Martinique	13 219	19 800	20 070	19 160
Reunion	10 537	17 325	18 304	17 639

* CEROM Estimate
Source : INSEE



Number of workers

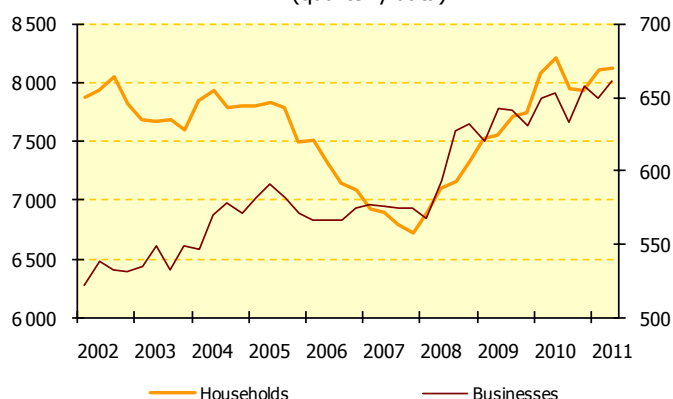
	2000	2008	2009	Var. 09/08
Agriculture and fishing*	740	339	275	-18,9%
Industry and energy	2 653	3 304	3 223	-2,5%
Construction industry	2 107	3 713	3 697	-0,4%
Trade	3 481	4 394	4 524	3,0%
Services	9 456	13 284	13 993	5,3%
Total	18 437	24 781	25 712	3,8%

Source : Pôle Emploi

* The sample use by Pôle Emploi as a basis for this survey is not exhaustive: indeed, the non-agricultural private sector was disregarded from the sampling process.

Indicators of vulnerability of the households and the businesses

Ban on writing cheques (quarterly data)



Source : IEDOM

Over indebtedness cases (quarterly data)

